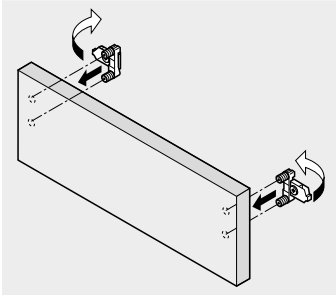
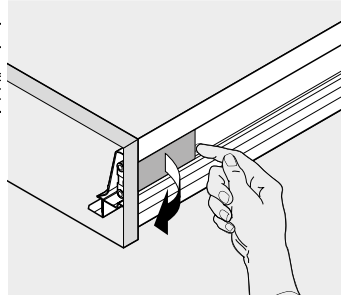
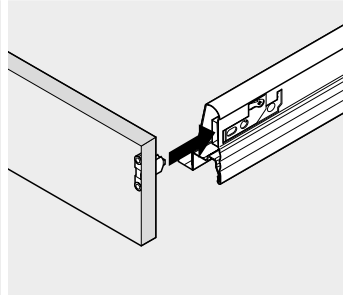




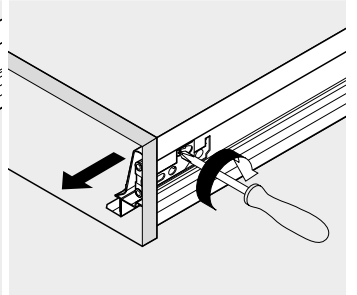
Drawer



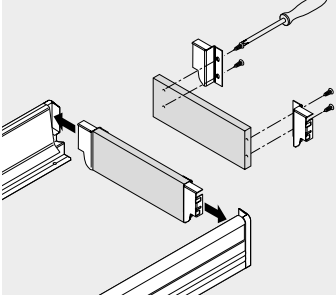
Assembly



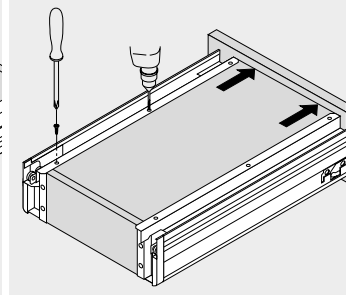
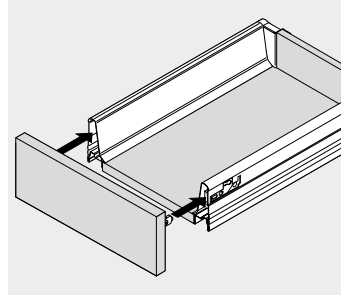
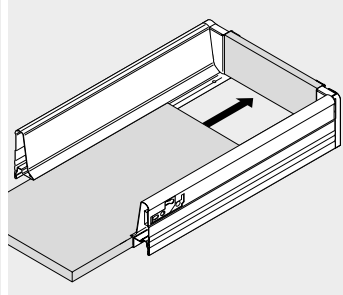
Removal



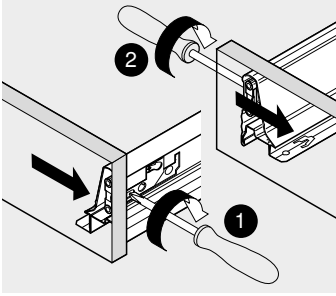
Drawer



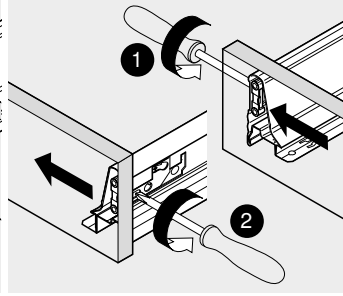
Assembly



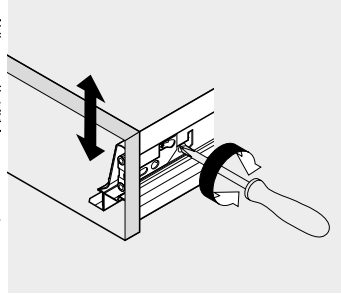
Adjustment



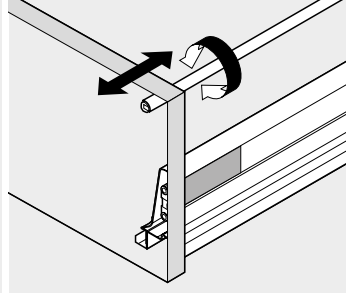
Side adjustment
To the right 1 mm



Side adjustment
To the left 1 mm

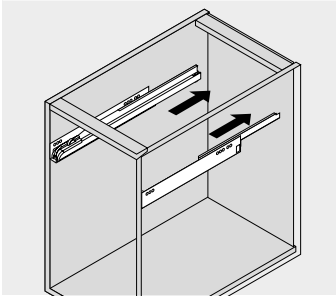


Height adjustment
 ± 2 mm

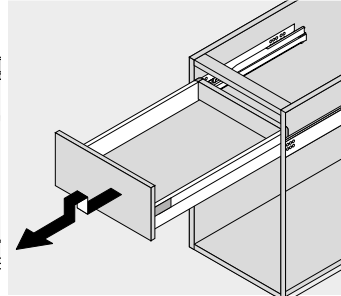
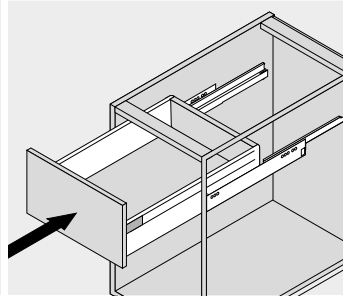


Tilt adjustment

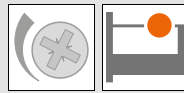
Drawer insertion and removal



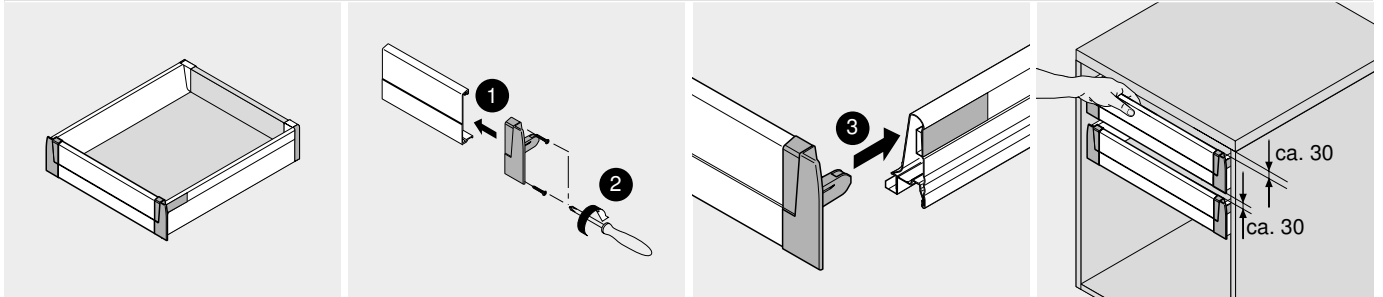
Insertion



Removal

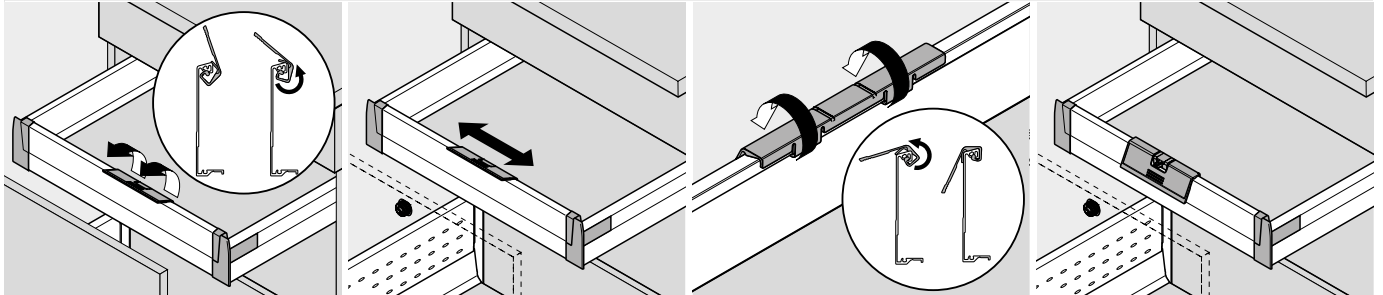


Inner drawer, height M and K – ZIF.70M0



30 mm dimension can be reduced if ZIF.7005 handle is utilised

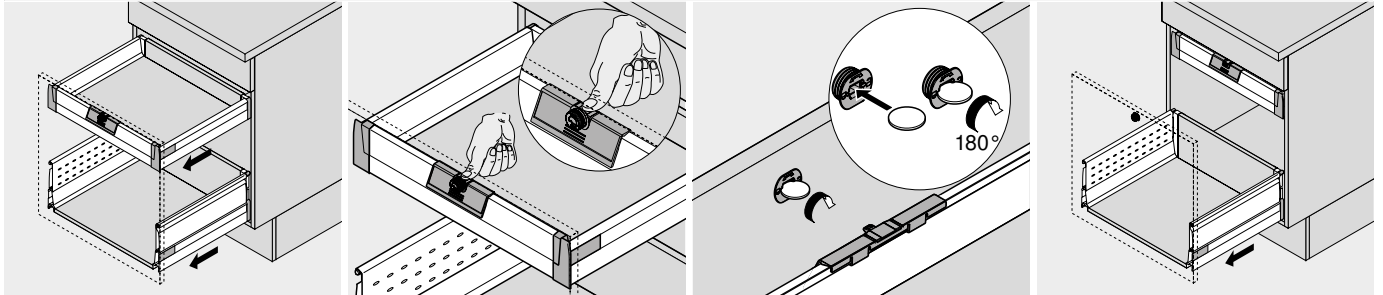
Handle – ZIF.7005; handle and latch – ZIF.7007



Assembly

Attached to the centre on the front

Handle – ZIF.7005; handle and latch – ZIF.7007

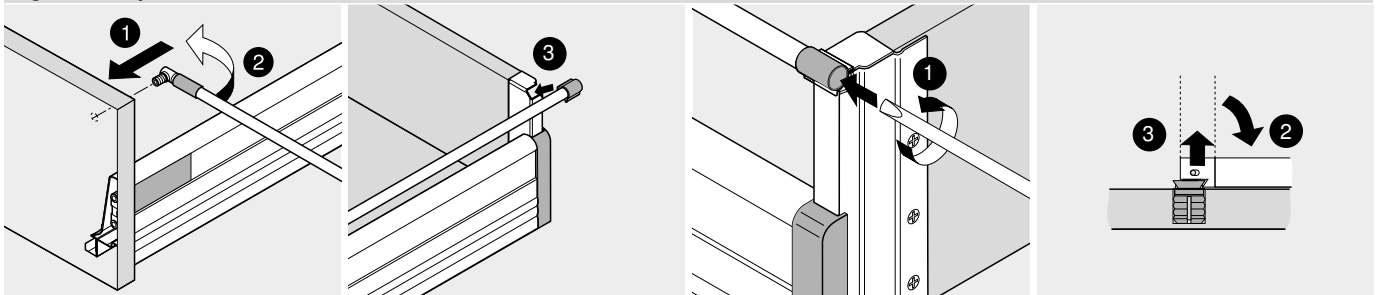


Latch is activated

Released when latch is activated

Activate or deactivate latch

High fronted pull-out



Front assembly

Back assembly

Back removal

Front removal