

# Nova Pro - General Information

Benefits for your assemblers



## Simple installing and removing

The Nova drawers can be installed or removed with just one movement (with no levers to press).

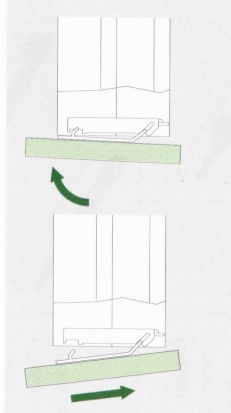
## Front installation + removal (tool-free)

The drawer front panel can be attached or removed with one movement. Simple and tool-free!



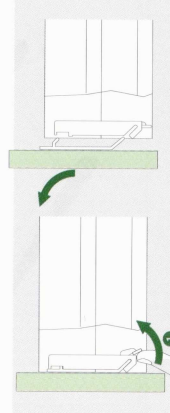
### Assembly

1. Angle the front panel with the installation hooks into the lower slanted slot. (0-positioning with the installation hooks).
2. Tilt the front in and...
3. ...Press down.



### Removing

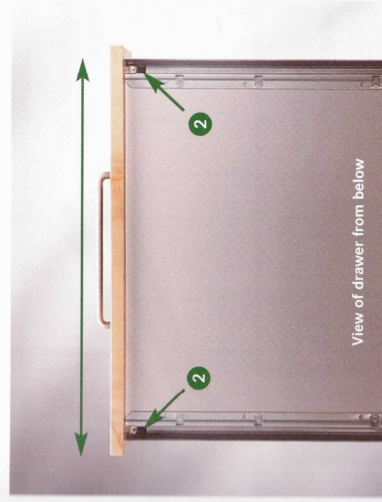
1. Press the catch 1 and ...
2. ... Remove front panel.



## Installation

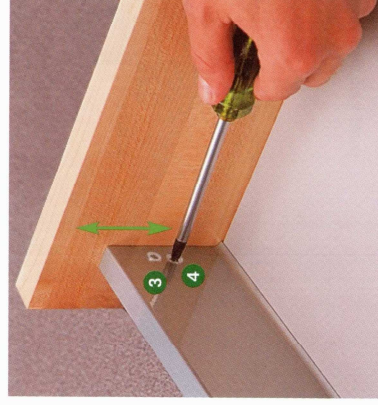
### Tool-free side adjustment

1. Press the catch hooks 2 (left and right) to the back.
2. Lift the front up slightly and slide over the ribs.



### Height adjustment

Slightly loosen screw 3 and slide the front with the eccentric screw 4 into the desired height position. Adjustment range  $\pm 2$  mm. Tighten screw 3.



### Tilt adjustment of front

#### New for drawer side height 122 mm

Readily accessible tilt adjustment facility on the inside of the drawer side. The tilt adjustment is achieved by angling the drawer.

