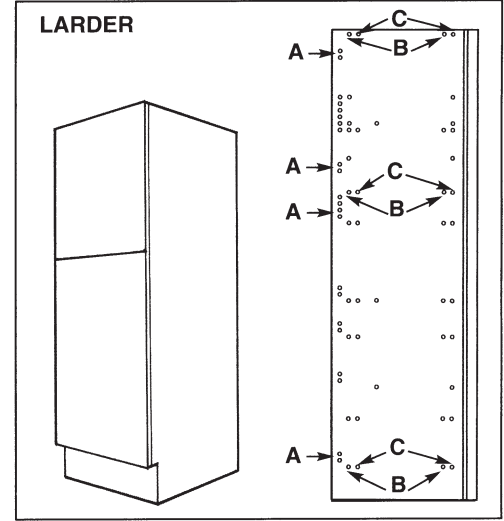
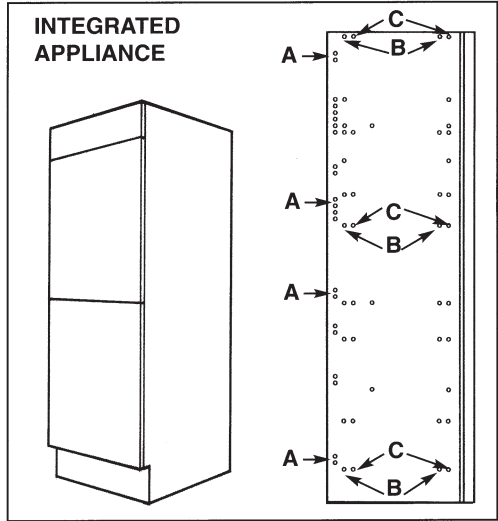
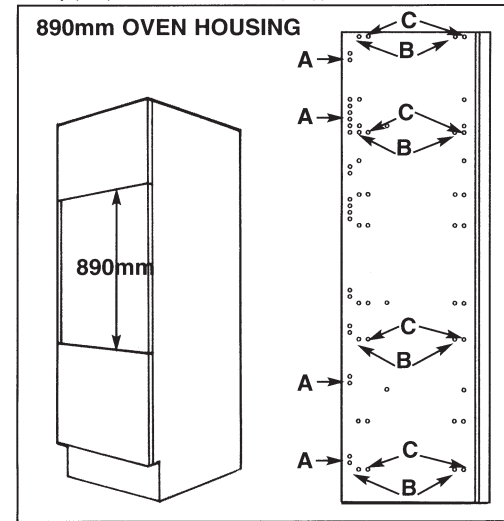


# OVEN HOUSING, APPLIANCE HOUSING & LARDERS. END PANEL HARDWARE POSITIONS

Please examine these drawings very carefully prior to assembly to determine the correct positions for hardware. Failure to do so could result in incorrect fitting or even damage to the items.  
 A = Hinge plate positions B = Mini-fix Bolt (Shelf) positions C = Wooden dowels

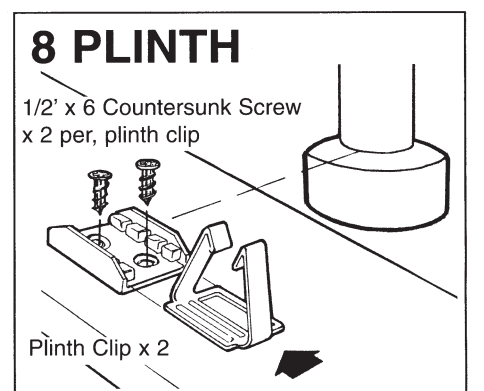
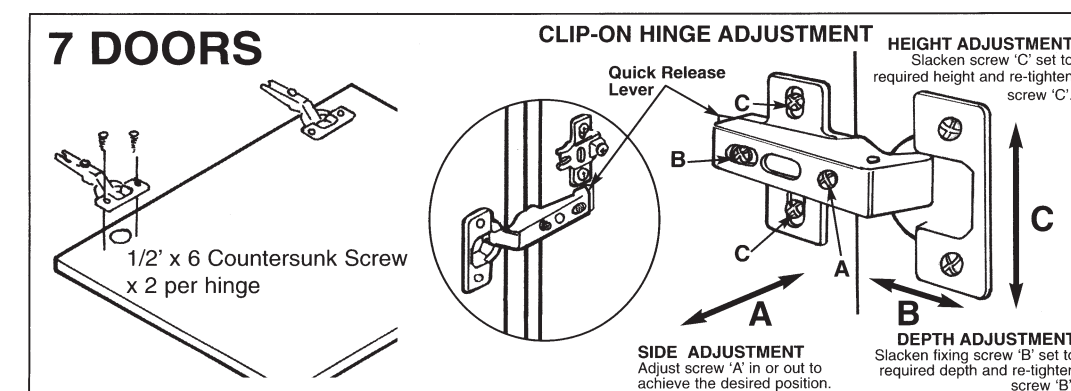
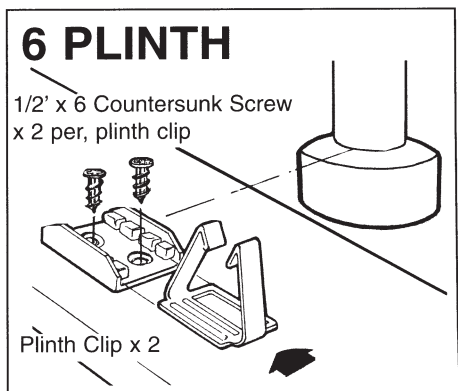
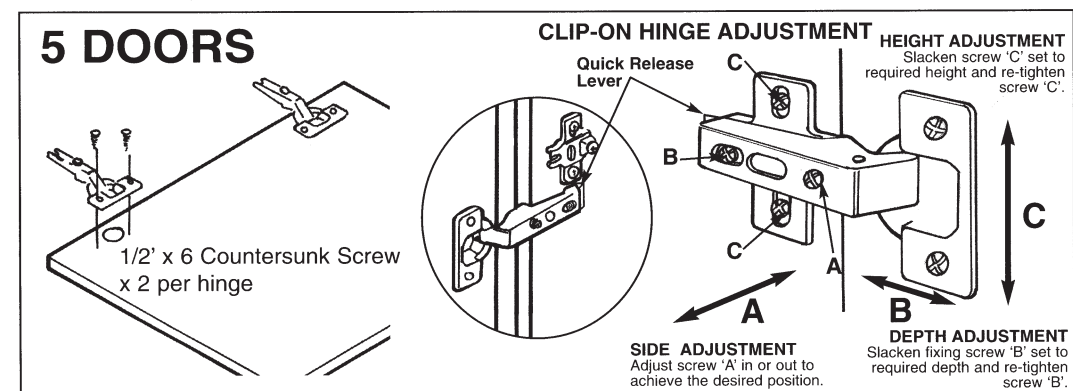
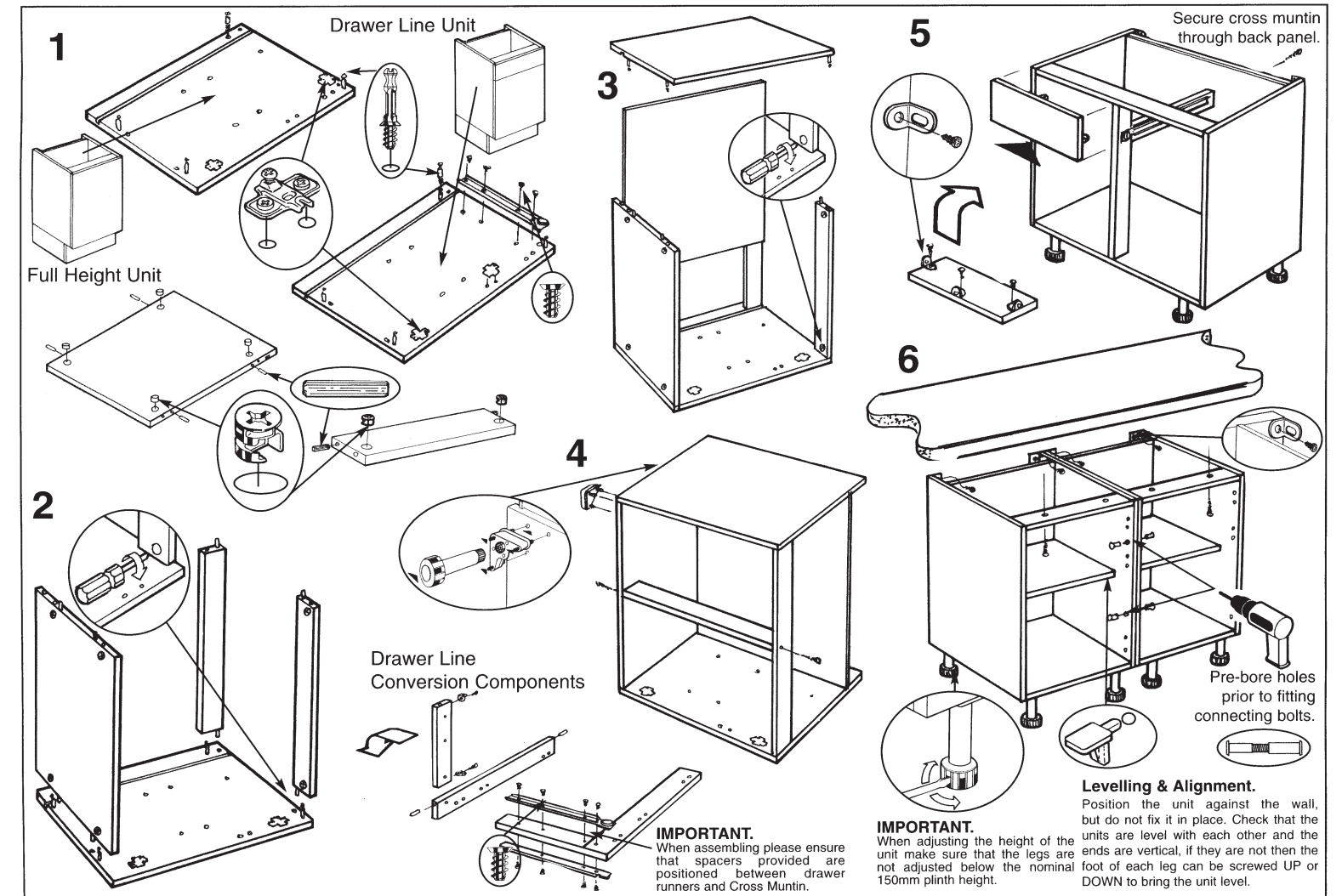
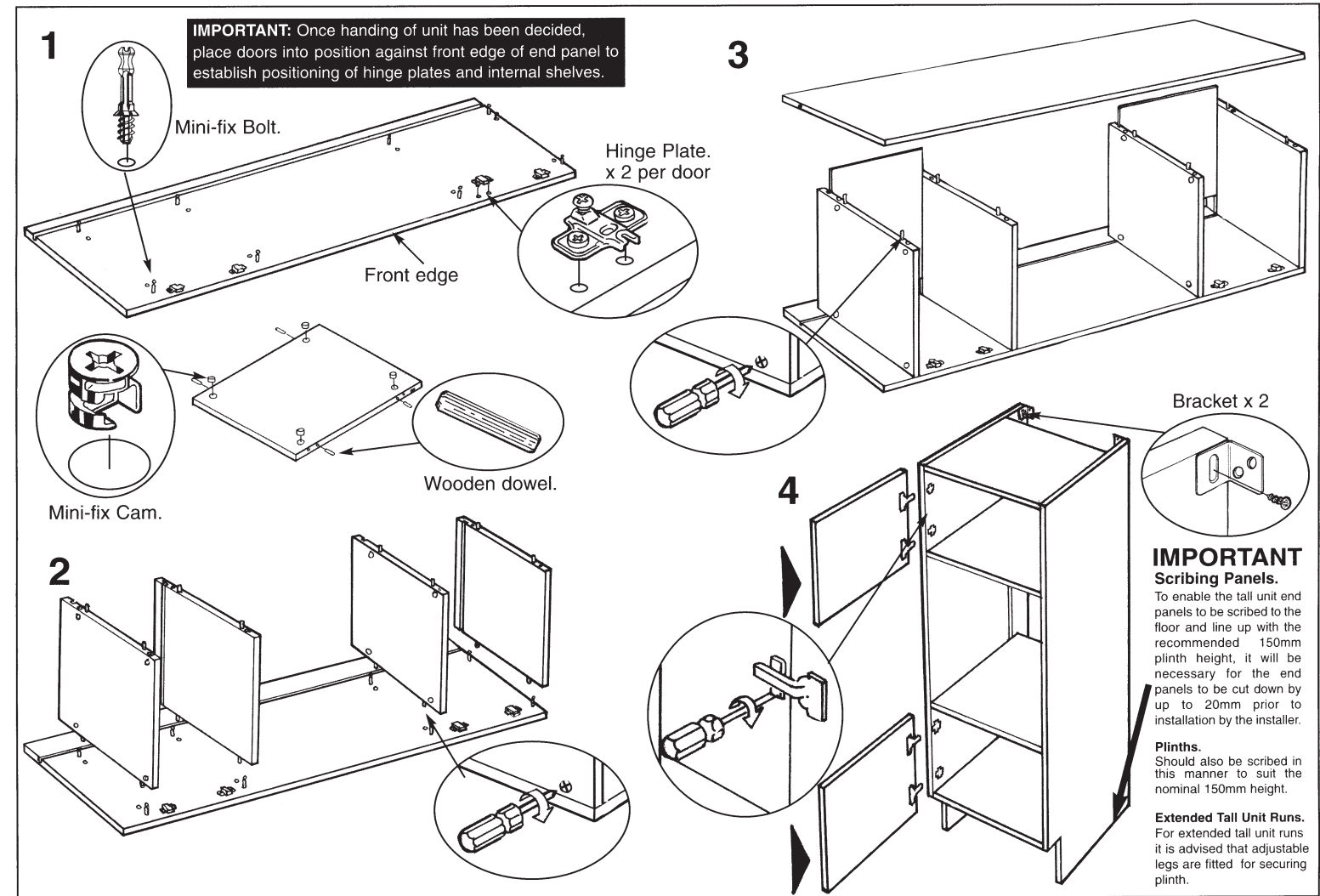
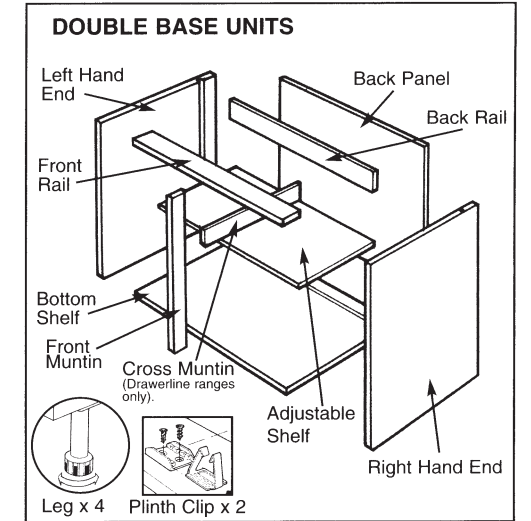
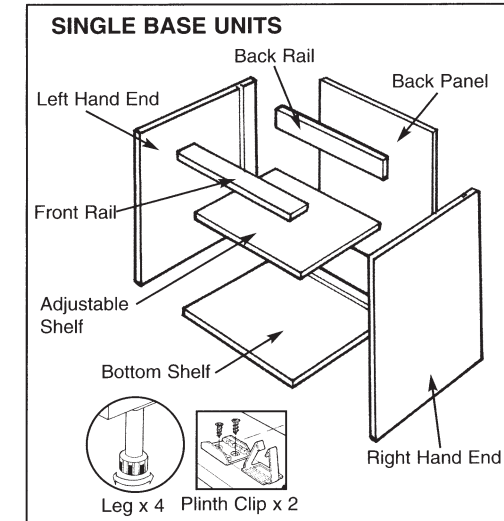
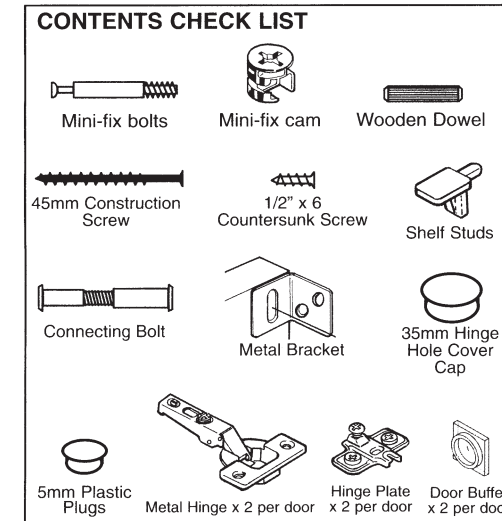
**VERY IMPORTANT NOTICE**  
 It is essential that the Appliance Manufacturers requirement for Ventilation Installation are adhered to. Failure to do so invalidates your guarantee.

**PLEASE NOTE:** The standard drilling position for an OVEN is for 900mm Oven only, (As indicated). Any other size of aperture ie: 600 or 1200mm or special Fridge Freezer will be required to be carried out by the customer or installer.



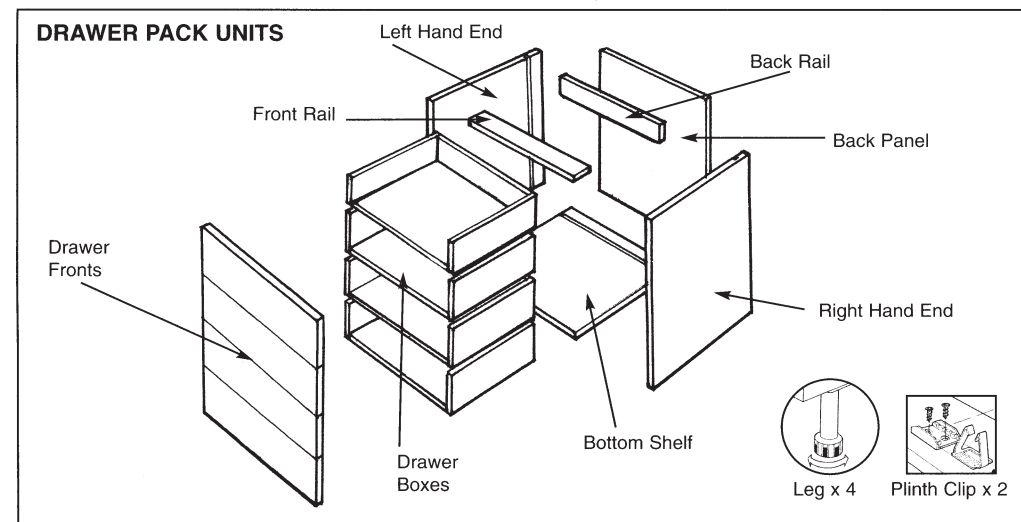
# SINGLE & DOUBLE BASE UNITS. END PANEL HARDWARE POSITIONS

Please examine these drawings very carefully prior to assembly to determine the correct positions for hardware.  
**Failure to do so could result in incorrect fitting or even damage to the items.**

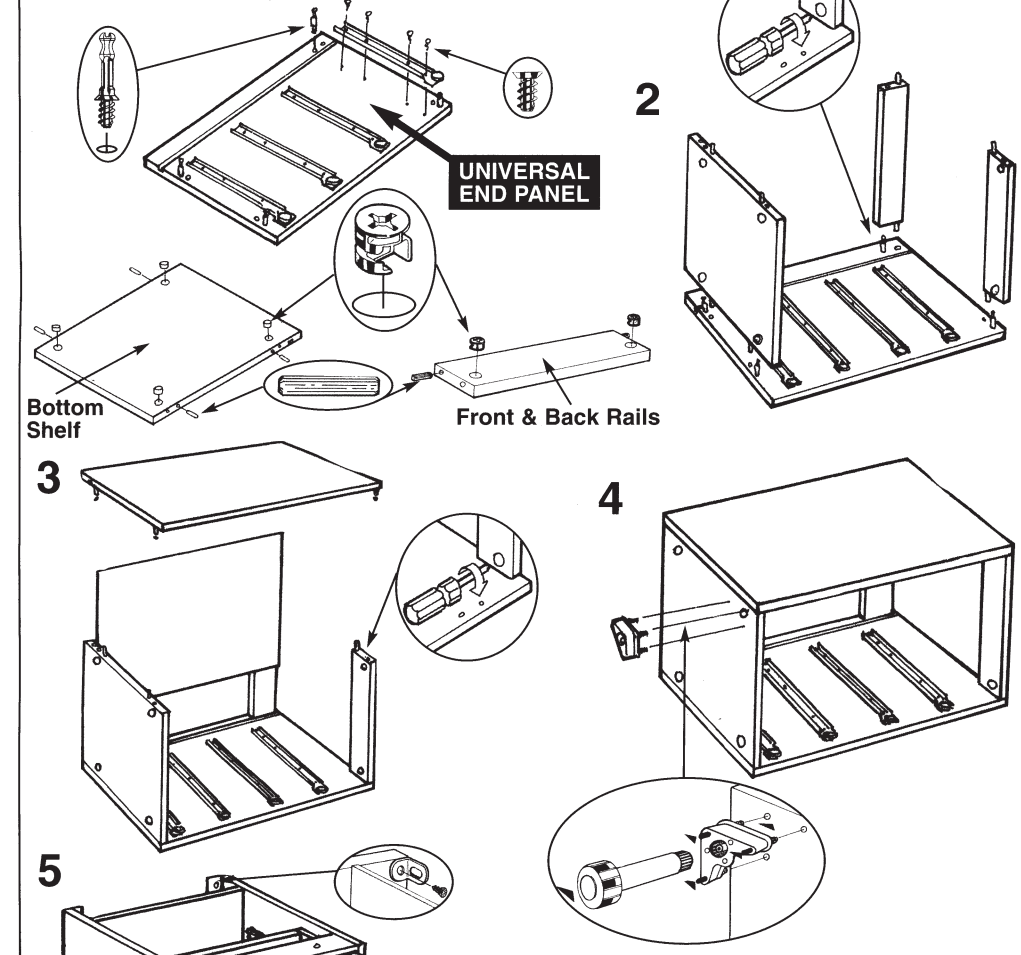


# DRAWER PACK UNITS. END PANEL HARDWARE POSITIONS

Please examine these drawings very carefully prior to assembly to determine the correct positions for hardware.  
Failure to do so could result in incorrect fitting or even damage to the items

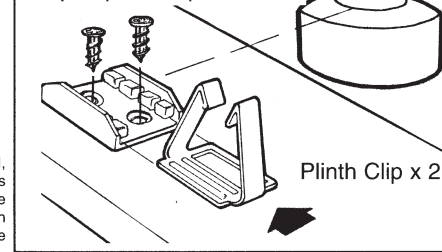


1 Dependant on which drawer pack is being used fit relevant amount of runners into pre-bored holes in end panels. Assembly diagrams show construction of 4 drawer pack.



## 6 PLINTH

1/2" x 6 Countersunk Screw x 2 per, plinth clip



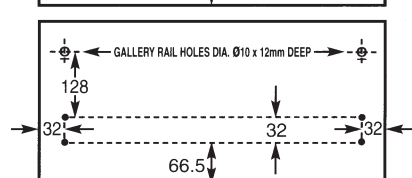
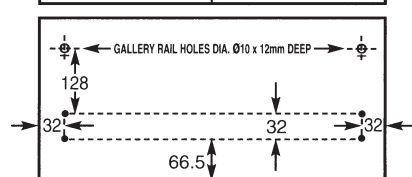
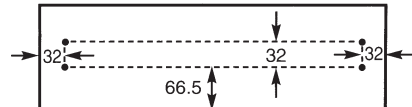
**IMPORTANT.** When adjusting the height of the unit make sure that the legs are not adjusted below the nominal 150mm plinth height.

**Levelling & Alignment.** Position the unit against the wall, but do not fix it in place. Check that the units are level with each other and the ends are vertical, if they are not then the foot of each leg can be screwed UP or DOWN to bring the unit level.

## DRAWER FRONT BRACKET FIXING POSITIONS. Diagrams show fixing to rear of drawer fronts.

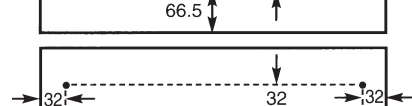
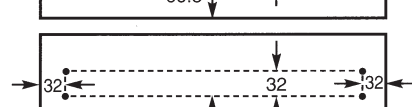
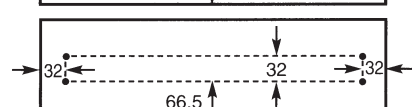
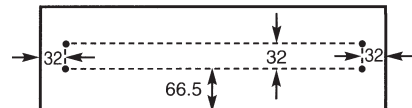
### TANDEM BOX

#### 3 DRAWER PACK

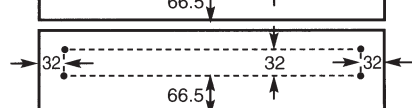
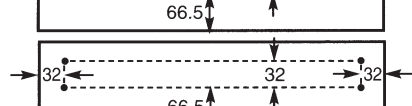
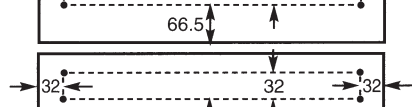


**DRAWER BOX ASSEMBLY DEEP DRAWERS**  
Substitute replacement deep back rail for standard back rail prior to assembly.  
Drawer front fixing positions for two deep drawer pack are the same as two lower drawers indicated above.

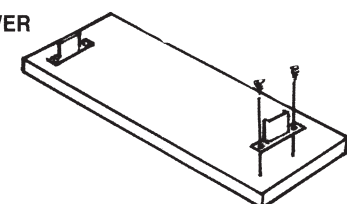
#### 4 DRAWER PACK



#### 5 DRAWER PACK

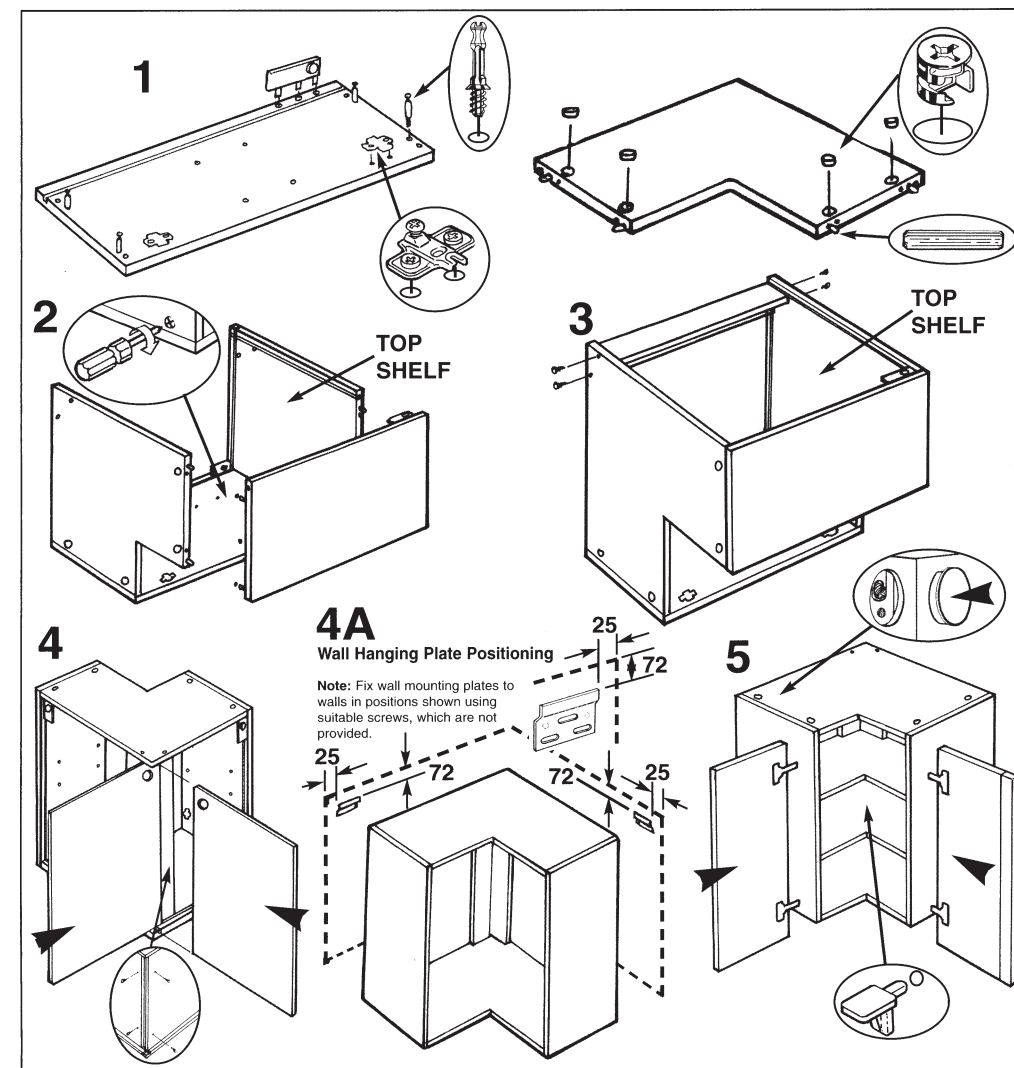
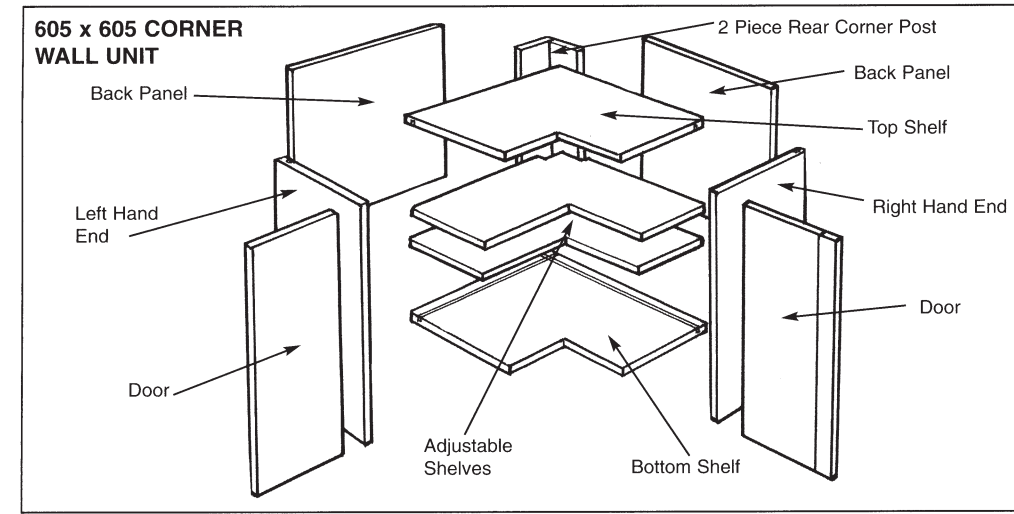


**FIXING DRAWER BRACKET TO DRAWER FRONT.**

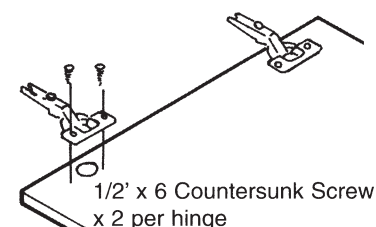


# CORNER WALL UNITS. END PANEL HARDWARE POSITIONS

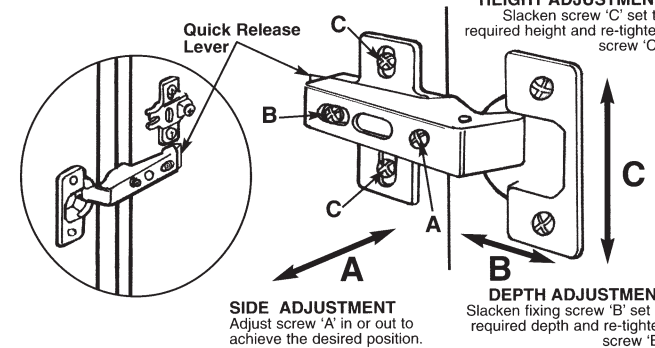
Please examine these drawings very carefully prior to assembly to determine the correct positions for hardware.  
Failure to do so could result in incorrect fitting or even damage to the items.



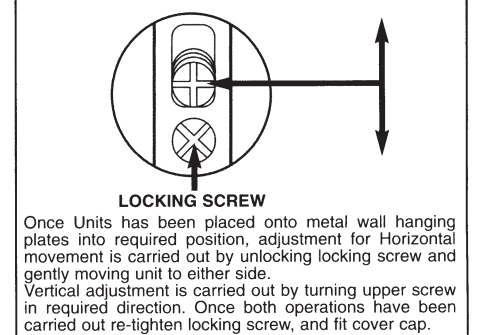
## 6 DOORS



## CLIP-ON HINGE ADJUSTMENT

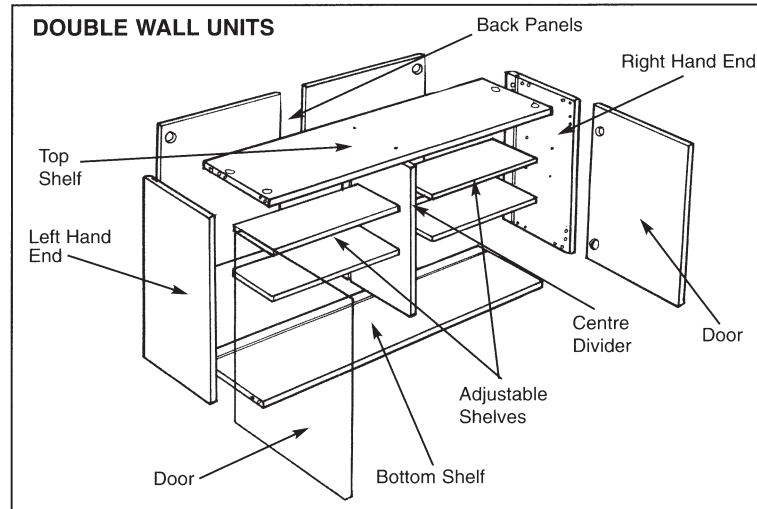
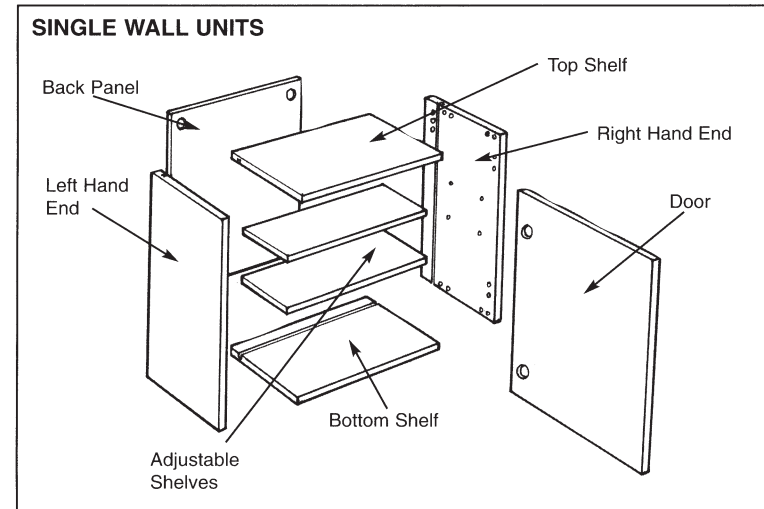


## 7 WALL BRACKET ADJUSTMENT



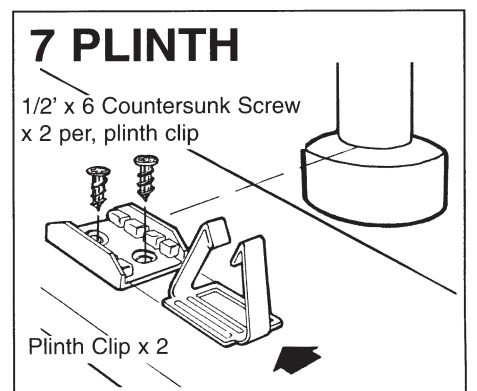
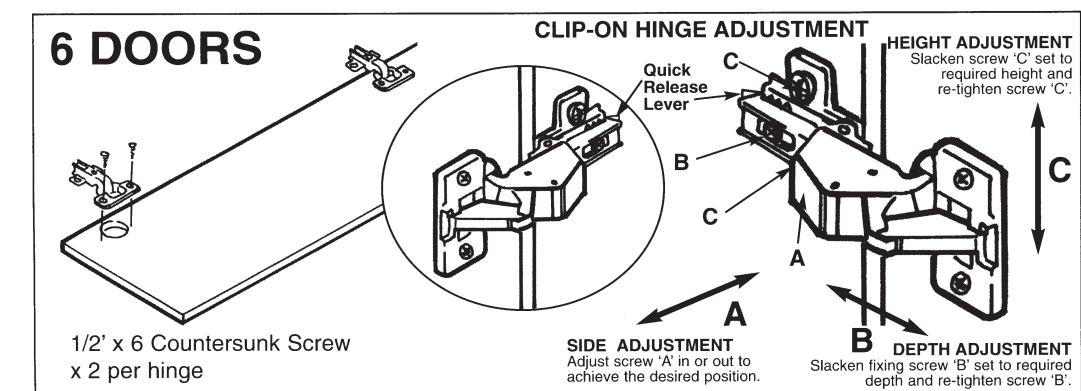
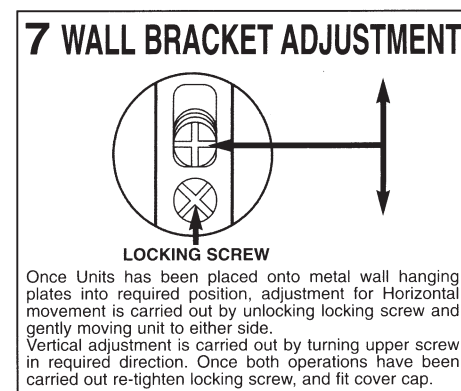
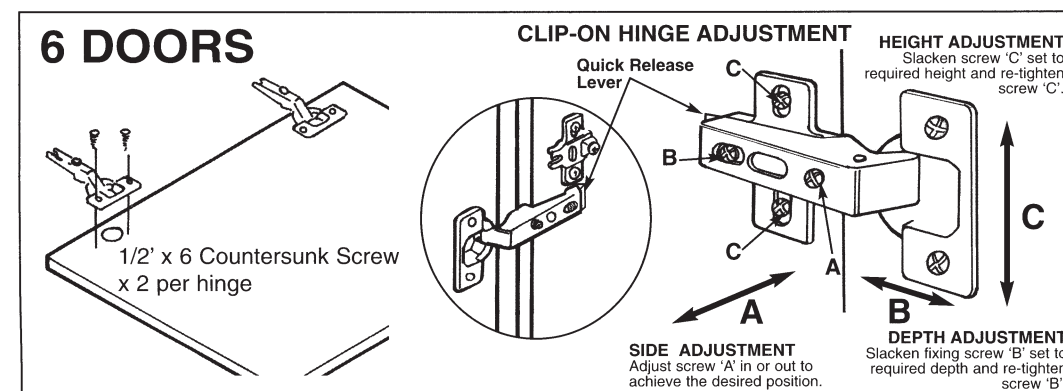
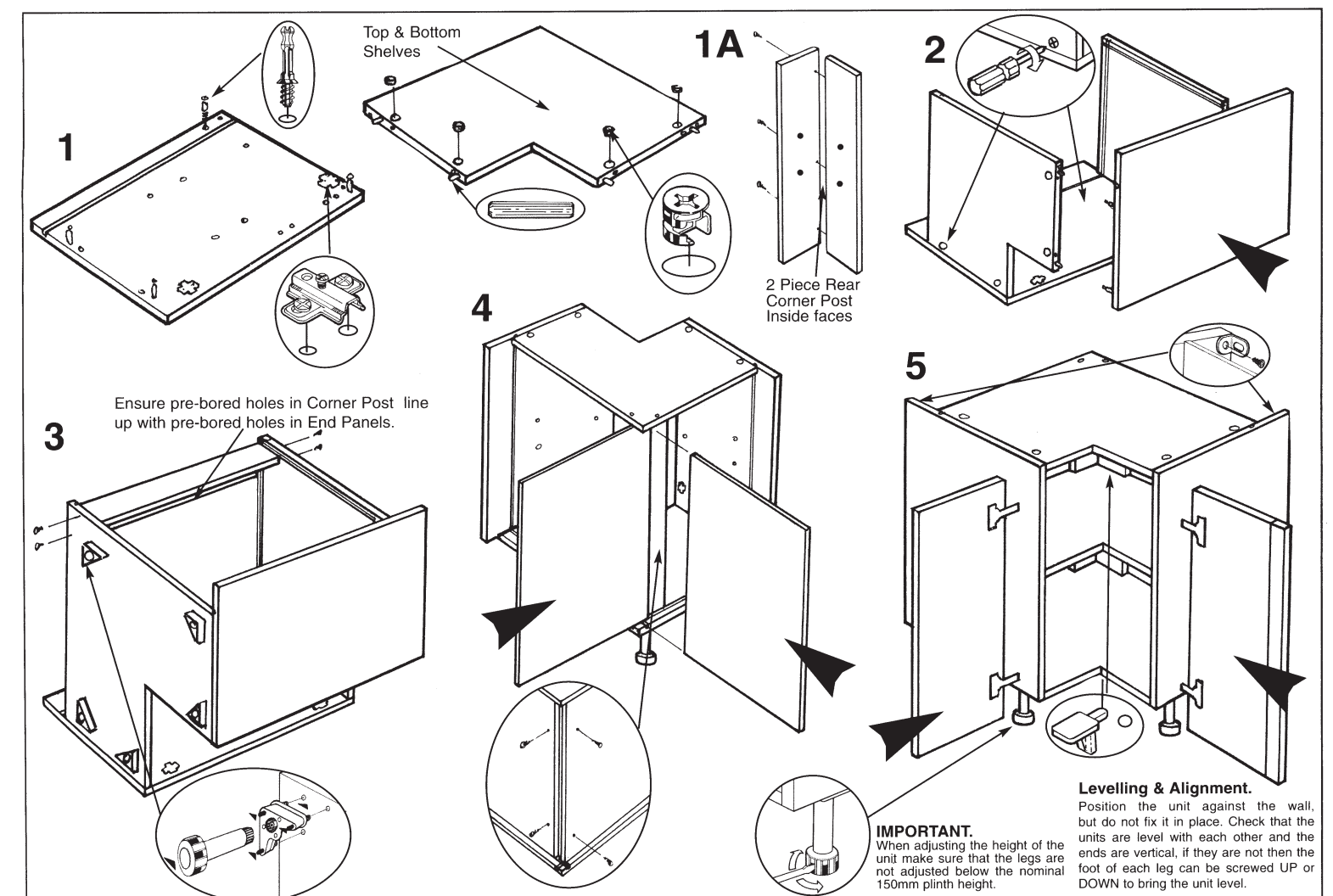
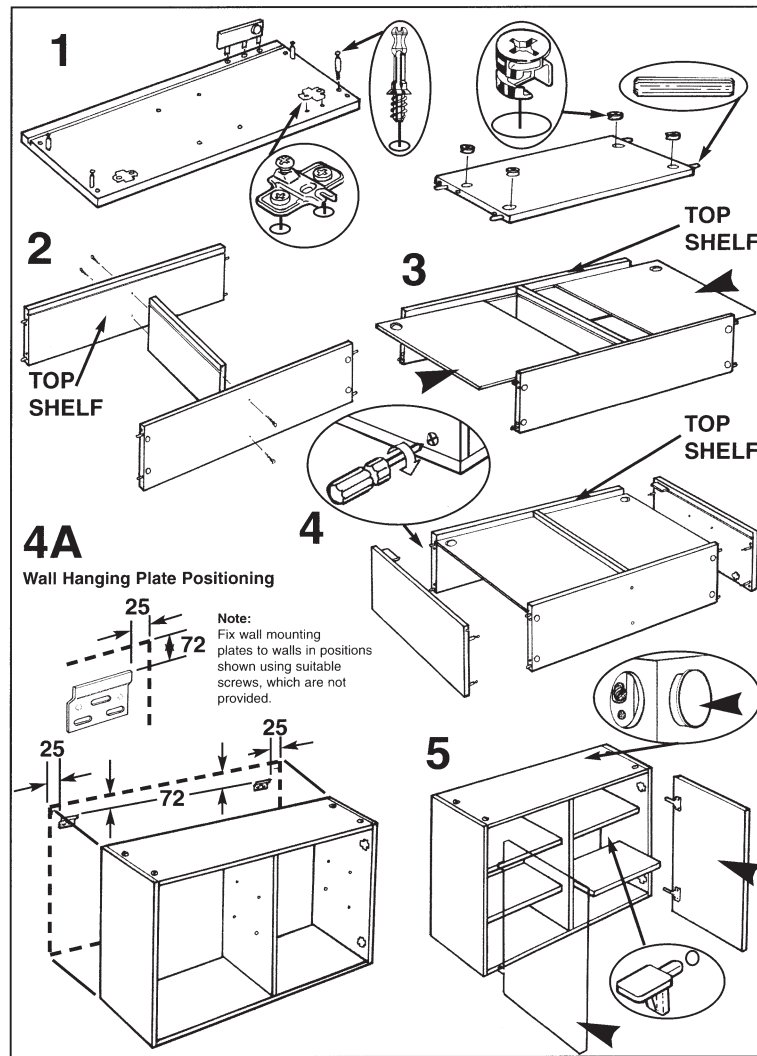
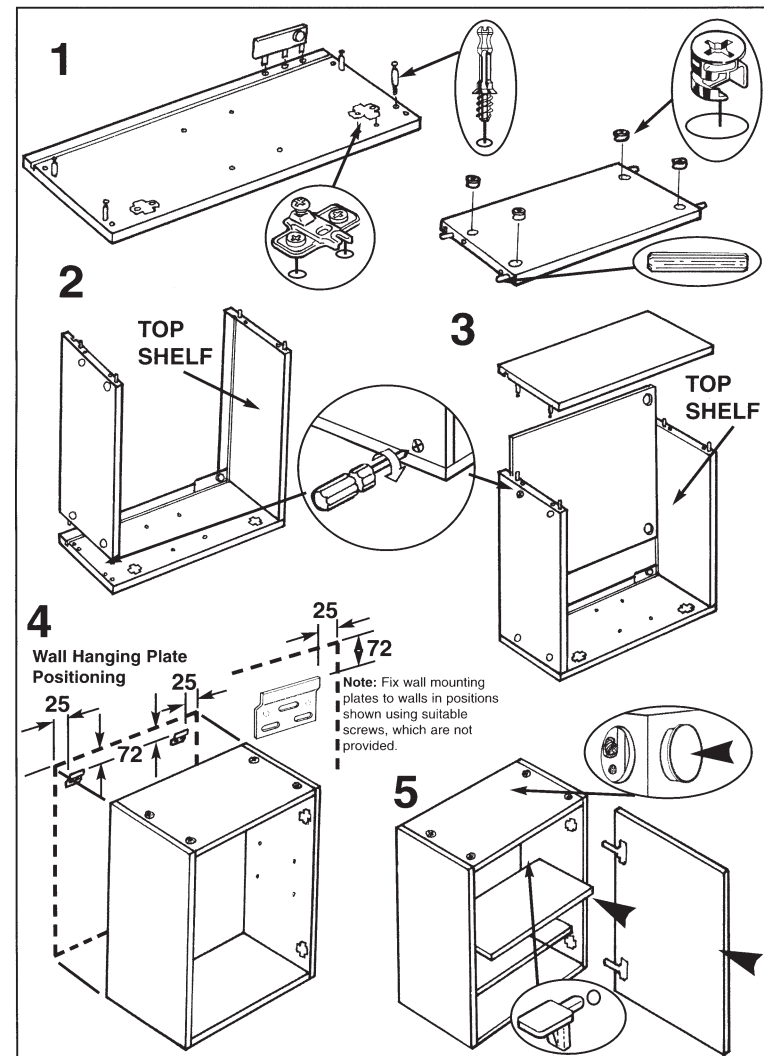
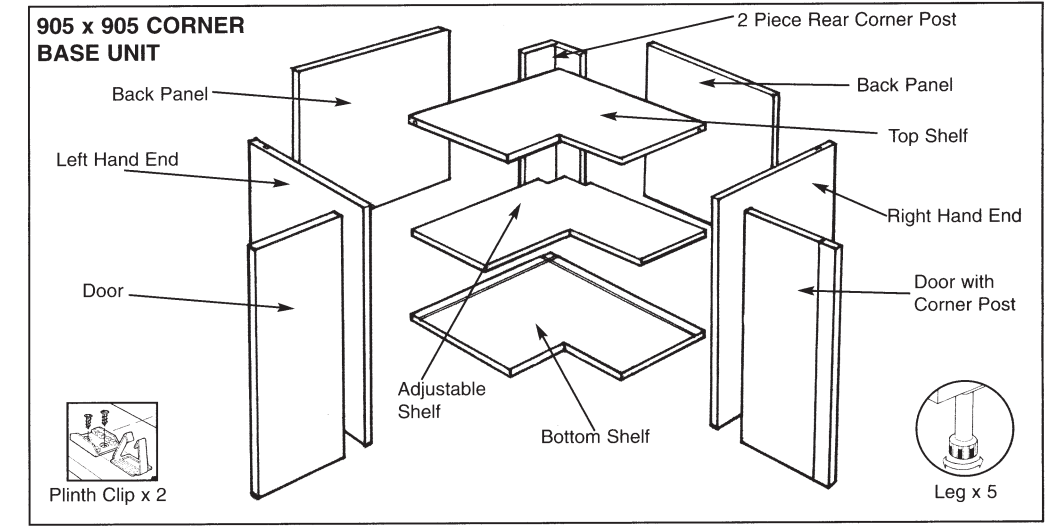
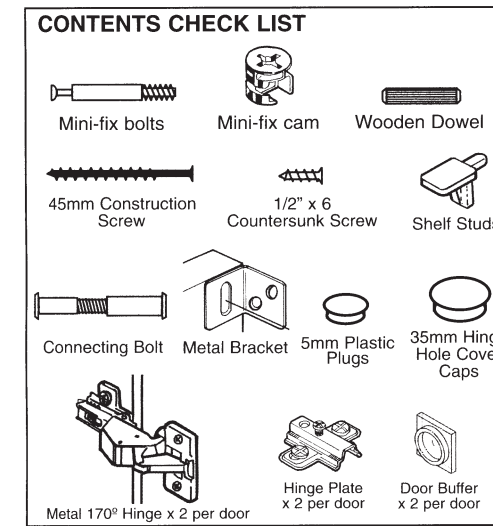
# SINGLE & DOUBLE WALL UNITS. END PANEL HARDWARE POSITIONS

Please examine these drawings very carefully prior to assembly to determine the correct positions for hardware.  
**Failure to do so could result in incorrect fitting or even damage to the items**



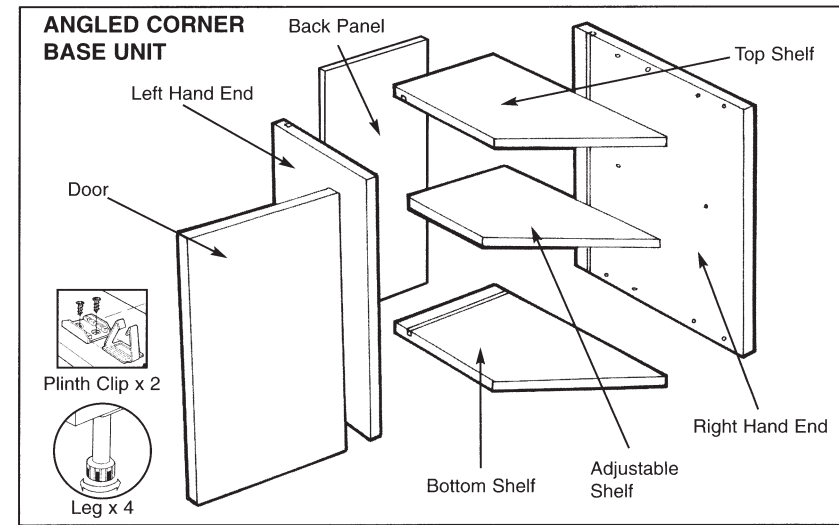
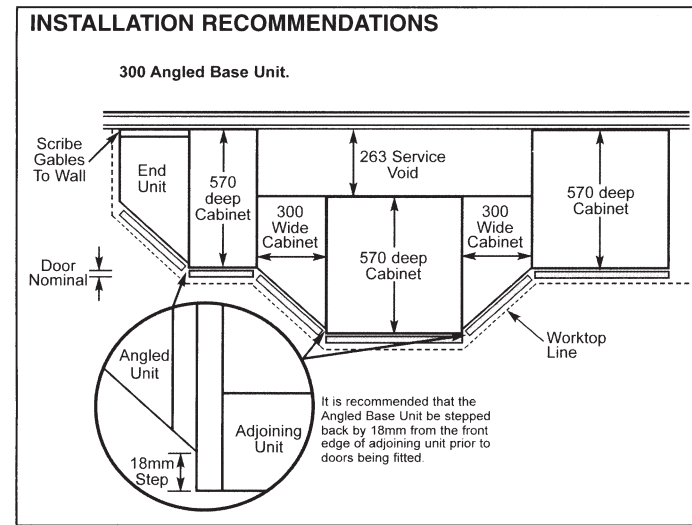
# 905 x 905 CORNER BASE UNIT. END PANEL HARDWARE POSITIONS

Please examine these drawings very carefully prior to assembly to determine the correct positions for hardware.  
**Failure to do so could result in incorrect fitting or even damage to the items.**



# ANGLED BASE UNIT. END PANEL HARDWARE POSITIONS

Please examine these drawings very carefully prior to assembly to determine the correct positions for hardware.  
**Failure to do so could result in incorrect fitting or even damage to the items.**



# 905 x 905 ANGLED CORNER BASE UNIT. END PANEL HARDWARE POSITIONS

Please examine these drawings very carefully prior to assembly to determine the correct positions for hardware.  
**Failure to do so could result in incorrect fitting or even damage to the items.**

