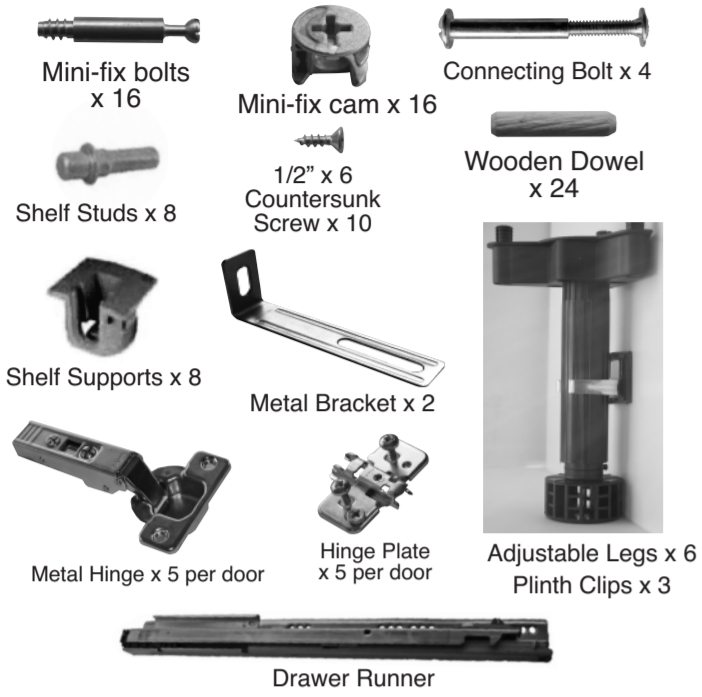
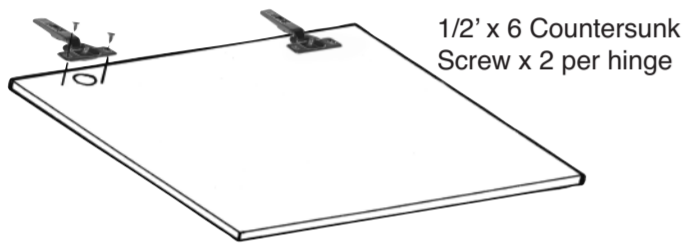


Please examine these drawings very carefully prior to assembly to determine the correct positions for hardware. Failure to do so could result in incorrect fitting or even damage to the items. Do not dispose of any packaging until you have checked the contents and completed assembly.

**CONTENTS CHECK LIST**

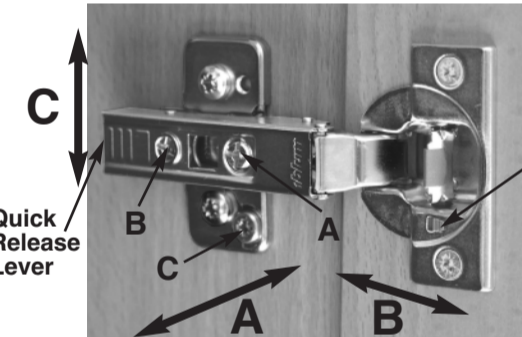


**DOORS**



**CLIP-ON HINGE ADJUSTMENT**

**HEIGHT ADJUSTMENT**  
Stacken screw 'C' clockwise or anti clockwise to achieve the desired position

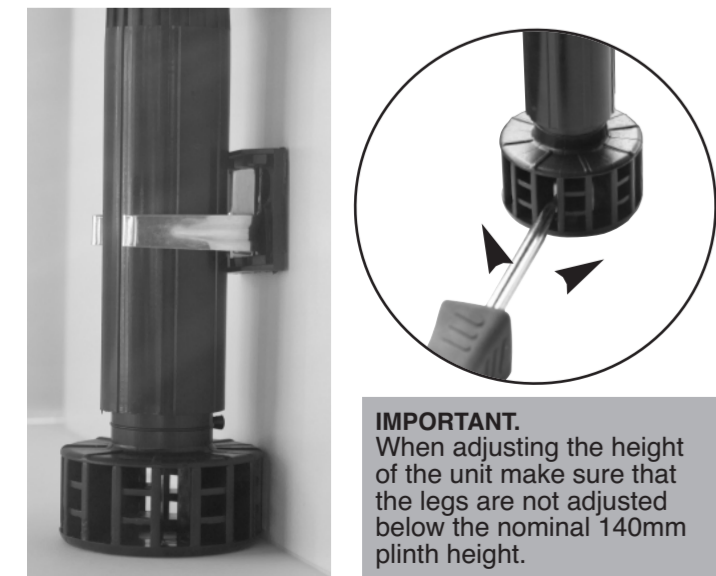
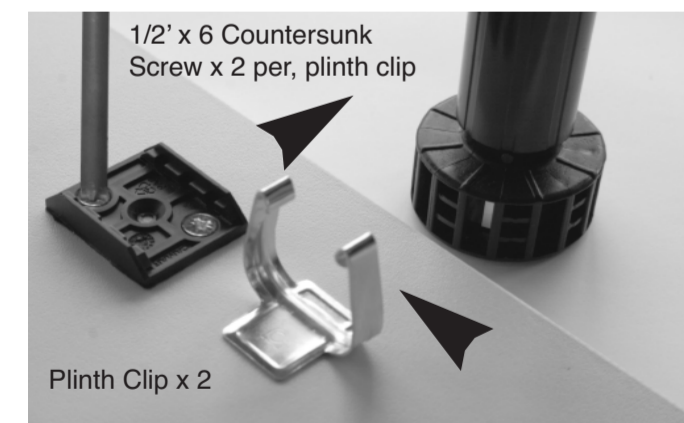


**SOFT CLOSE ON/OFF SWITCH**  
Soft close may need switching off on one hinge if small doors do not fully close or are slow to do so.

**SIDE ADJUSTMENT**  
Adjust screw 'A' clockwise or anti clockwise to achieve the desired position.

**DEPTH ADJUSTMENT**  
Adjust screw 'B' clockwise or anti clockwise to achieve the desired position.

**PLINTH/ADJUSTABLE LEGS**

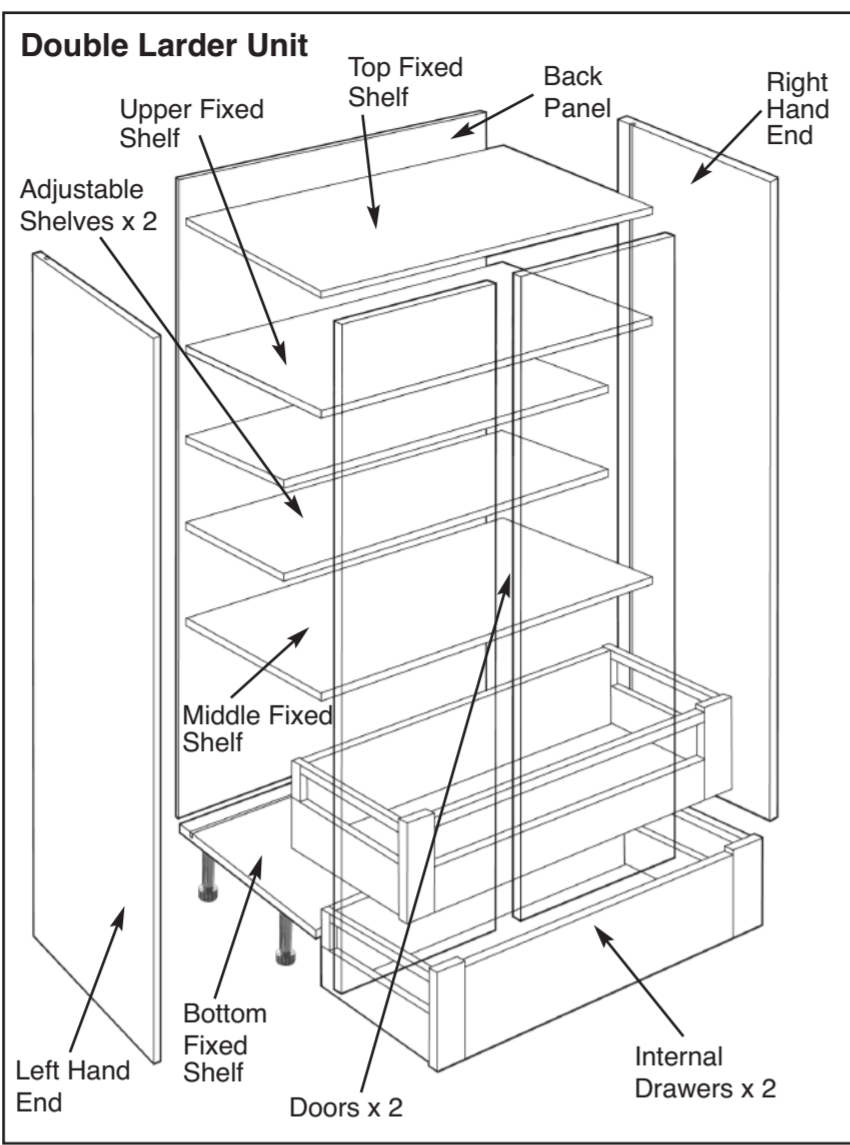


**WARNING! Due to the size and weight of this unit we recommend that two people are used for the assembly and installation.**

Note: We recommend that when the unit is assembled it should be sited as close to the position were it will be fitted, due to it's size and weight, as it will be extremely difficult to move once assembled.

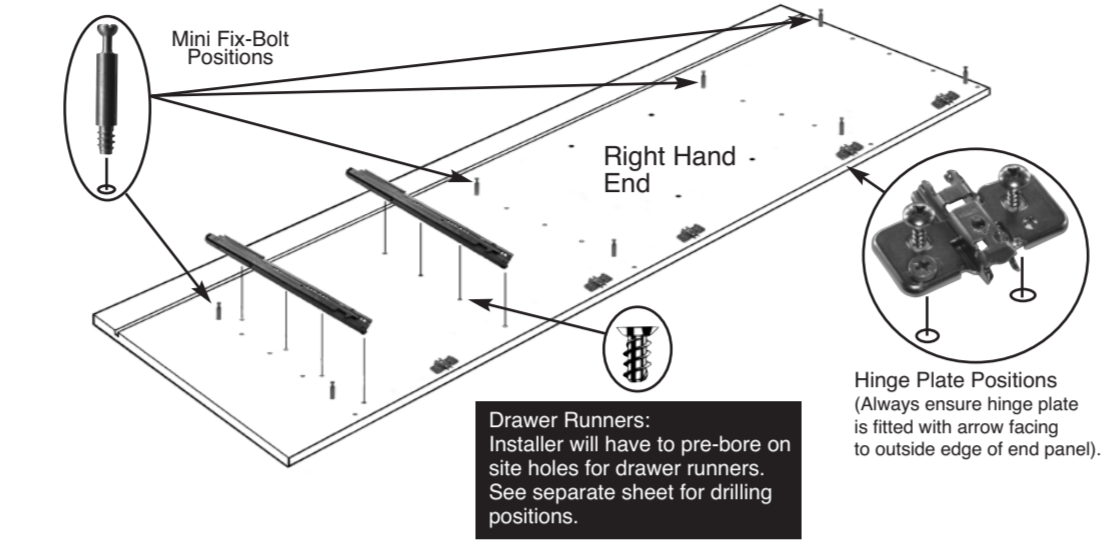
**FULL HEIGHT DOUBLE LARDER. 800, 900, 1000, 1200MM**

Note: End panels are handed, when assembling groove in panels should always face to rear.

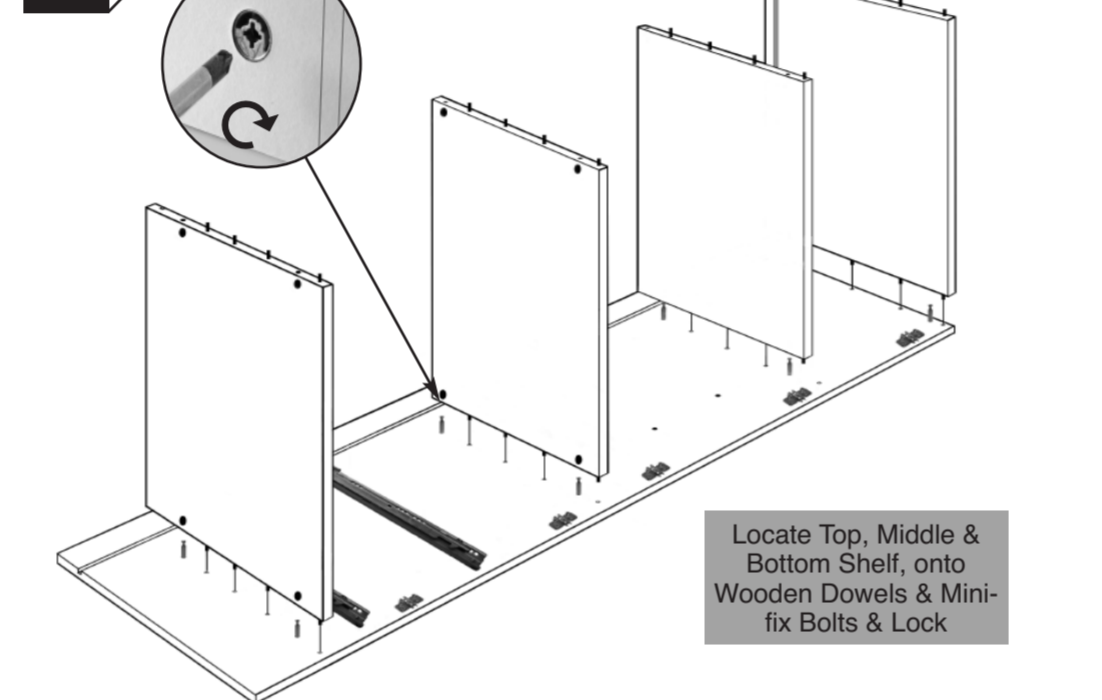


Note: It is strongly recommended that the unit is secured to the wall prior to Doors, drawers & adjustable shelves being fitted.

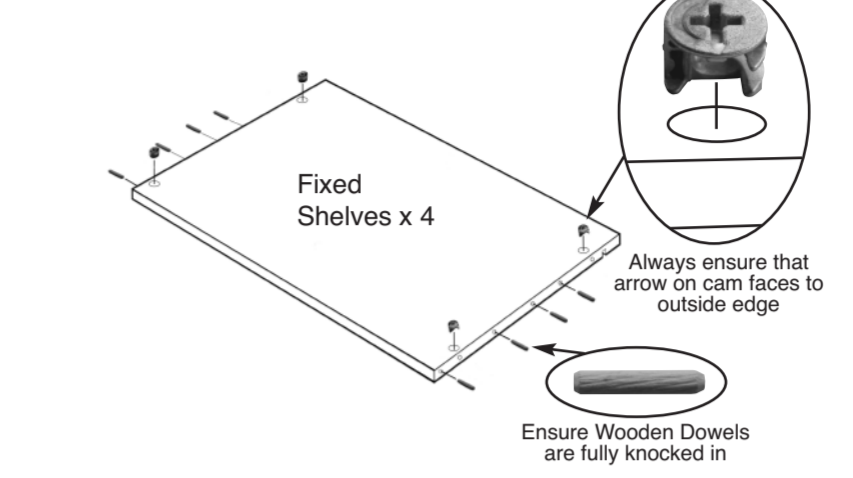
**1** Place end panel face down and secure mini fix bolts, drawer runners into positions indicated. Fit hinge plates into position. Repeat operation for Left Hand End Panel.



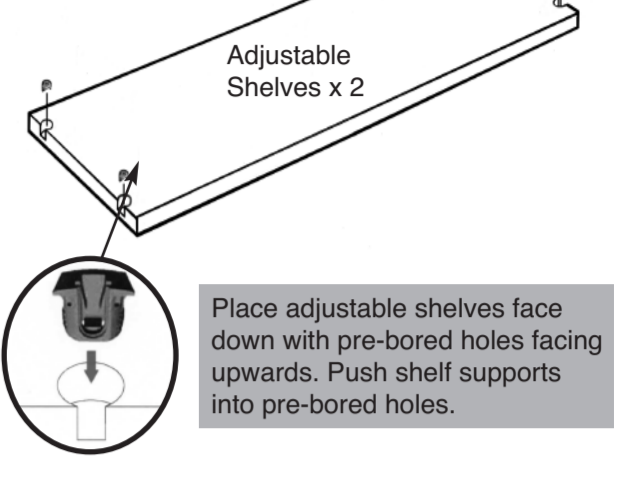
**3** Locate Top, Middle & Bottom Shelf, onto Wooden Dowels & Mini-fix Bolts & Lock



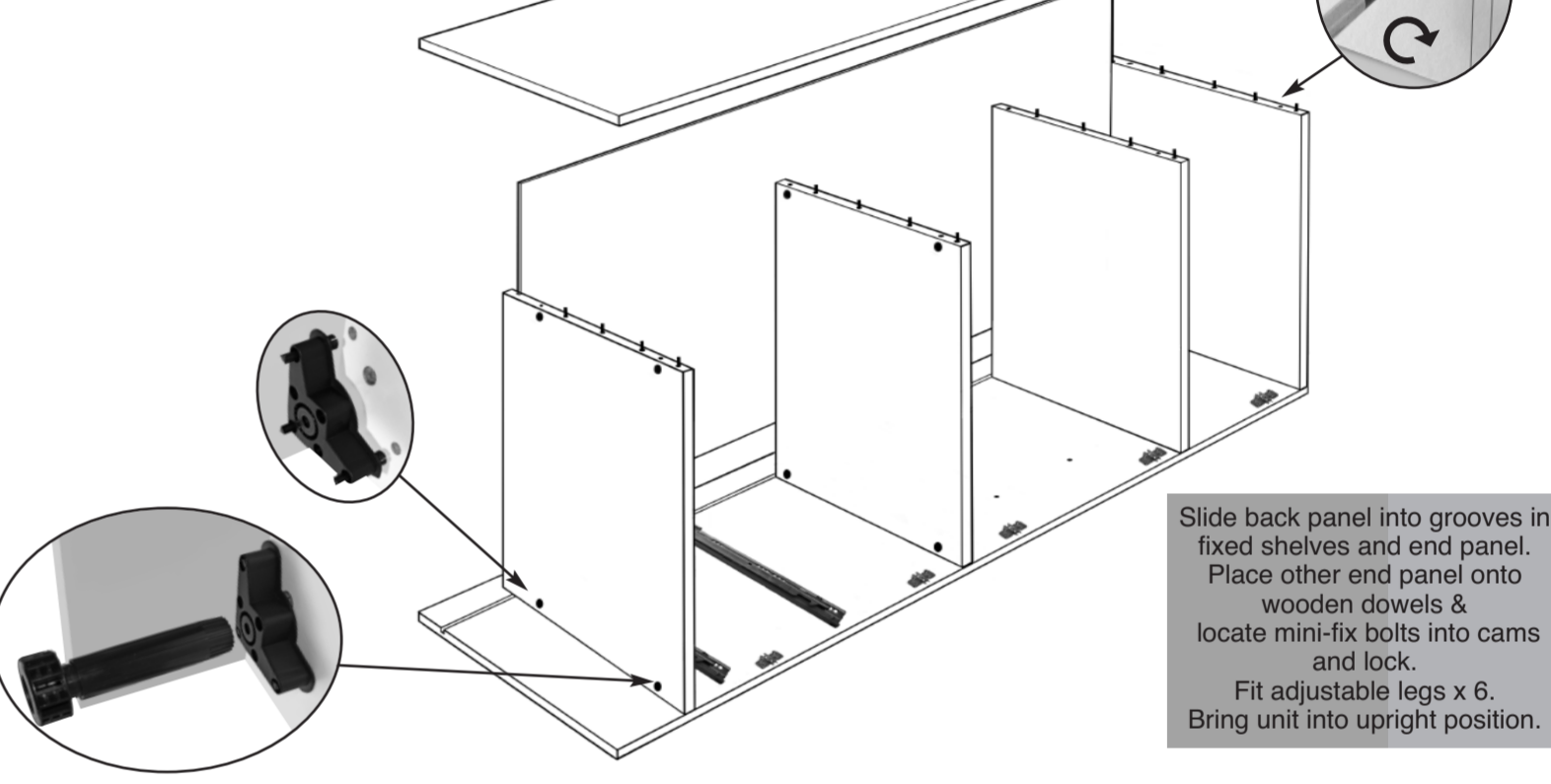
**2** Mini-fix cams are fitted to underneath. Groove for back panel is inside cabinet



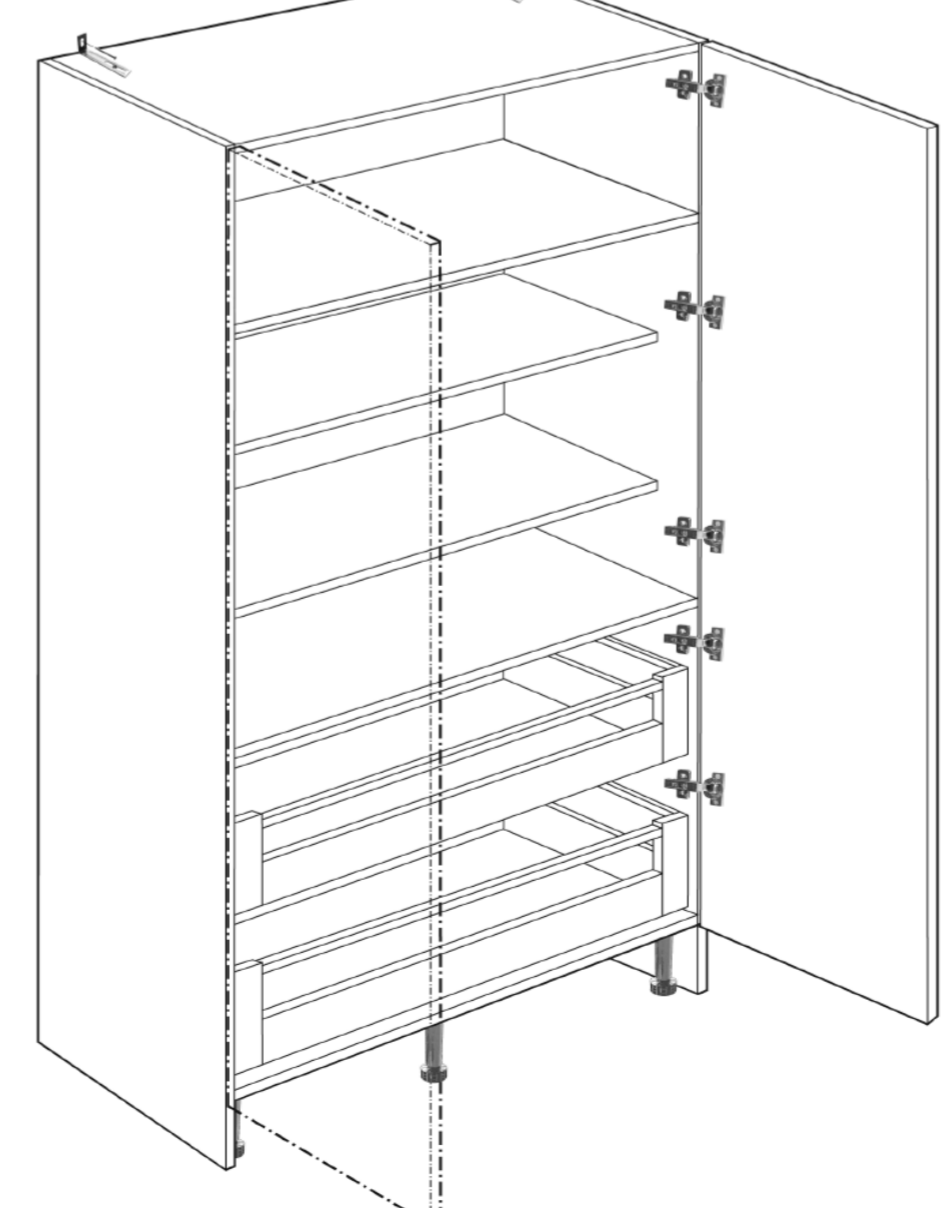
**2B** Place adjustable shelves face down with pre-bored holes facing upwards. Push shelf supports into pre-bored holes.



**4** Slide back panel into grooves in fixed shelves and end panel. Place other end panel onto wooden dowels & locate mini-fix bolts into cams and lock. Fit adjustable legs x 6. Bring unit into upright position.



**6** Place shelves onto shelf supports and firmly press home. Bring drawers into position on runners and push home. Bring doors into position locate clip-on hinges onto hinge plates. (See clip-on hinge adjustment opposite for alignment details).

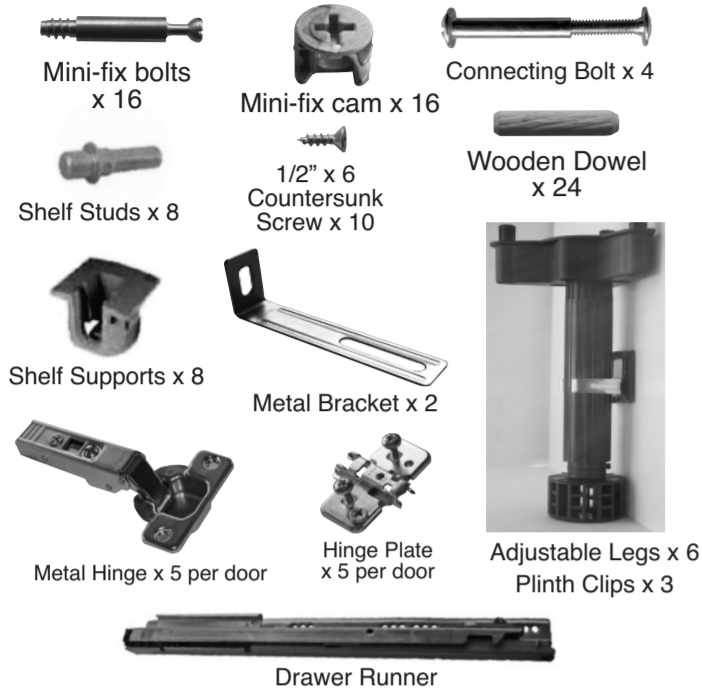


Place shelves onto shelf supports and firmly press home. Bring drawers into position on runners and push home. Bring doors into position locate clip-on hinges onto hinge plates. (See clip-on hinge adjustment opposite for alignment details).

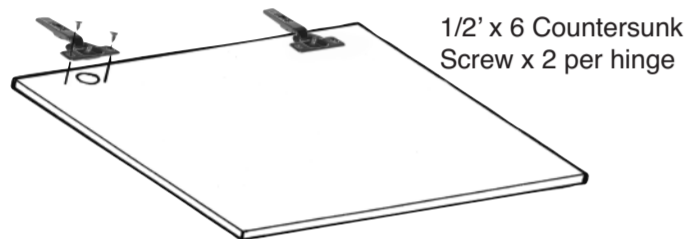
Bring unit into position were it is to be fitted and level in all plains, place 'L' shape brackets provided onto top shelf and secure. Secure unit to wall, screws cannot be provided because of difereing wall materials. When unit is securely fitted in position firmly push shelf supports into pre-bored holes in end panels. **IMPORTANT.** When adjusting the height of the unit make sure that the legs are not adjusted below the nominal 140mm plinth height.

Please examine these drawings very carefully prior to assembly to determine the correct positions for hardware. Failure to do so could result in incorrect fitting or even damage to the items. Do not dispose of any packaging until you have checked the contents and completed assembly.

**CONTENTS CHECK LIST**

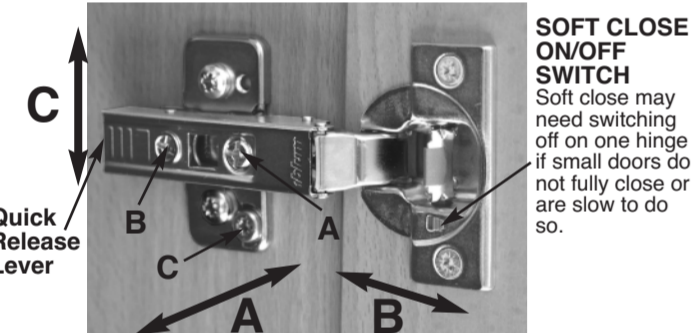


**DOORS**



**CLIP-ON HINGE ADJUSTMENT**

**HEIGHT ADJUSTMENT.** Slacken screw 'C' clockwise or anti clockwise to achieve the desired position



**SOFT CLOSE ON/OFF SWITCH**  
Soft close may need switching off on one hinge if small doors do not fully close or are slow to do so.

**SIDE ADJUSTMENT**  
Adjust screw 'A' clockwise or anti clockwise to achieve the desired position.

**DEPTH ADJUSTMENT**  
Adjust screw 'B' clockwise or anti clockwise to achieve the desired position.

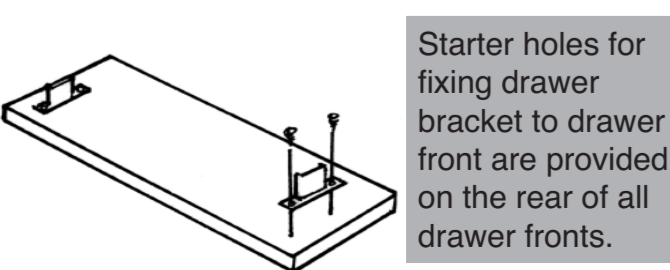
**PLINTH/ADJUSTABLE LEGS**



**DRAWER BRACKET**



**FIXING DRAWER BRACKET TO DRAWER FRONT**

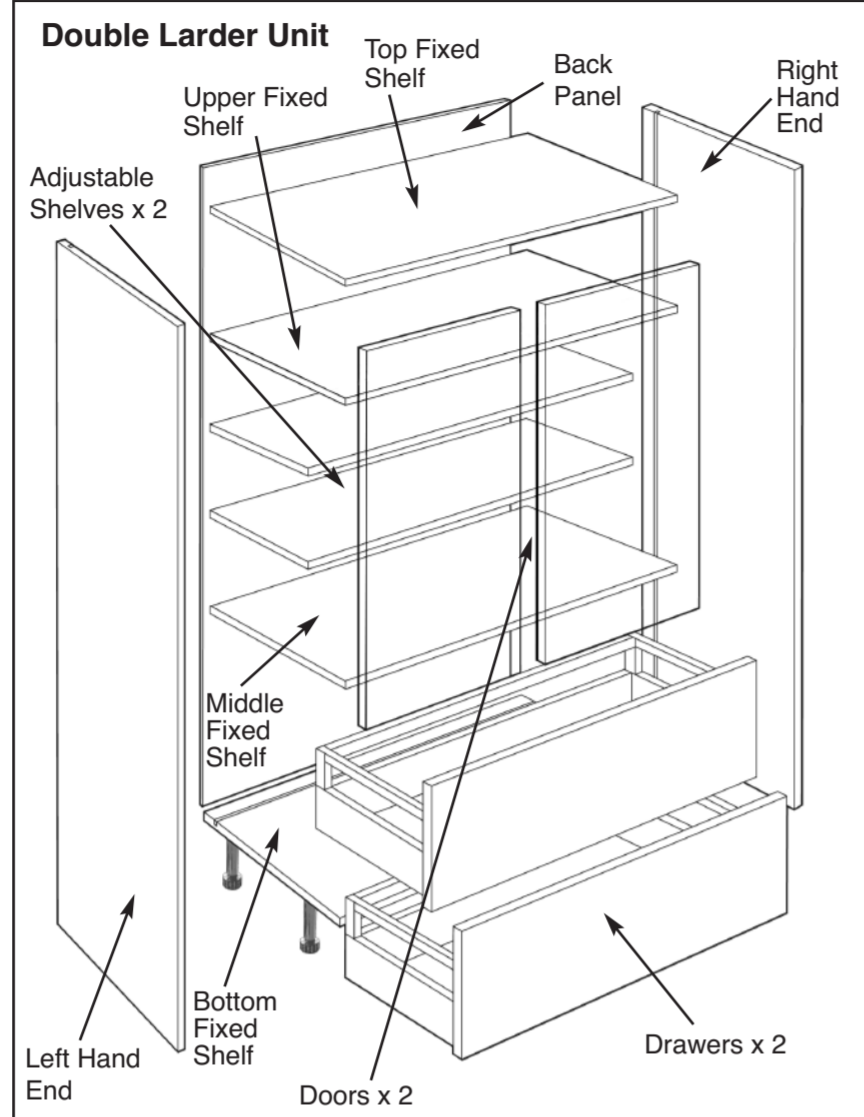


**WARNING! Due to the size and weight of this unit we recommend that two people are used for the assembly and installation.**

Note: We recommend that when the unit is assembled it should be sited as close to the position were it will be fitted, due to it's size and weight, as it will be extremely difficult to move once assembled.

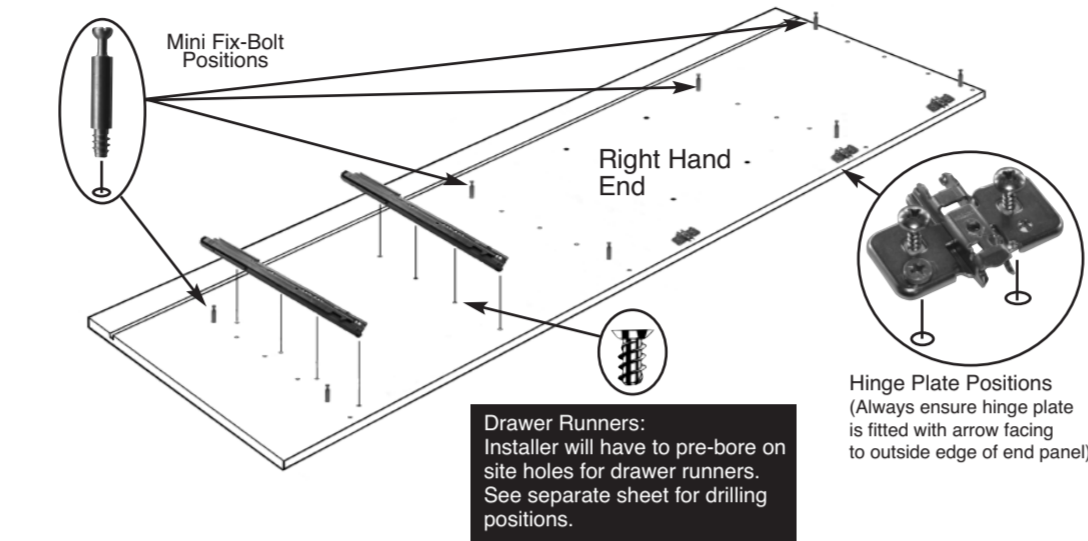
**FULL HEIGHT DRAWERLINE DOUBLE LARDER. 800, 900, 1000, 1200MM**

Note: End panels are handed, when assembling groove in panels should always face to rear.

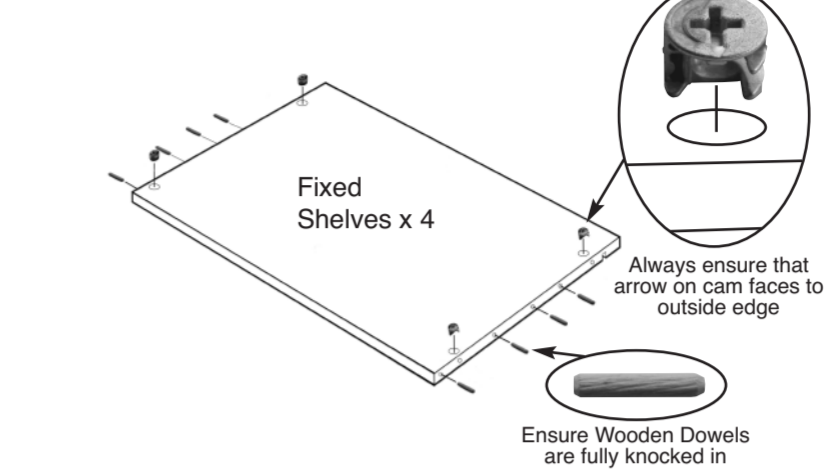


Note: It is strongly recommended that the unit is secured to the wall prior to Doors, drawers & adjustable shelves being fitted.

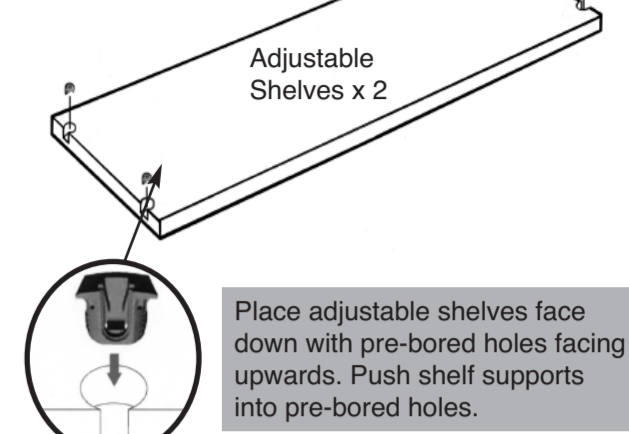
**1** Place end panel face down and secure mini fix bolts, drawer runners into positions indicated. Fit hinge plates into position. Repeat operation for Left Hand End Panel.



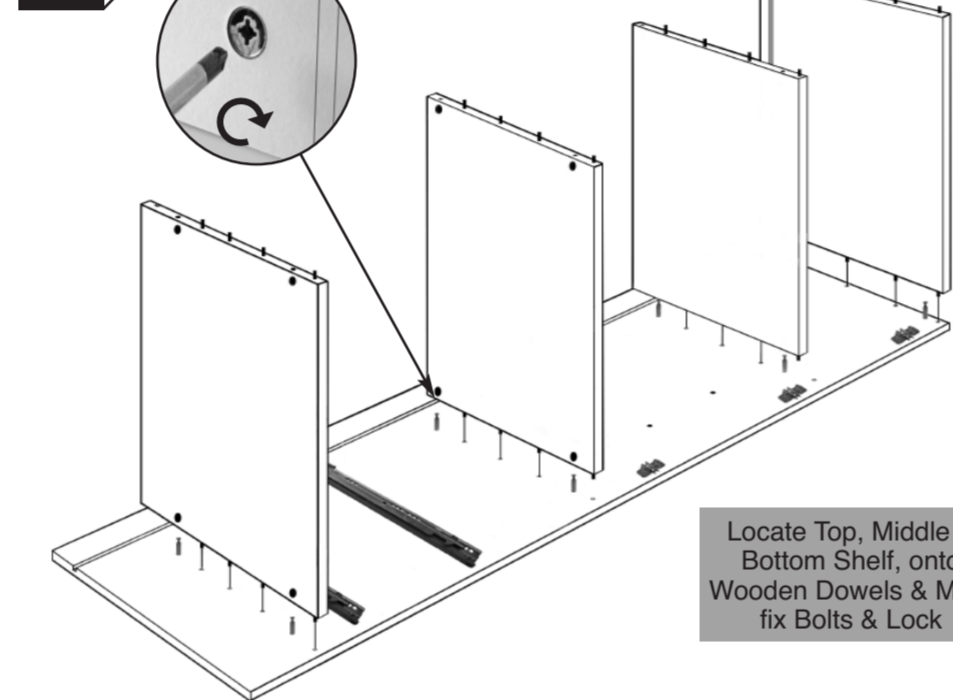
**2** Mini-fix cams are fitted to underneath. Groove for back panel is inside cabinet



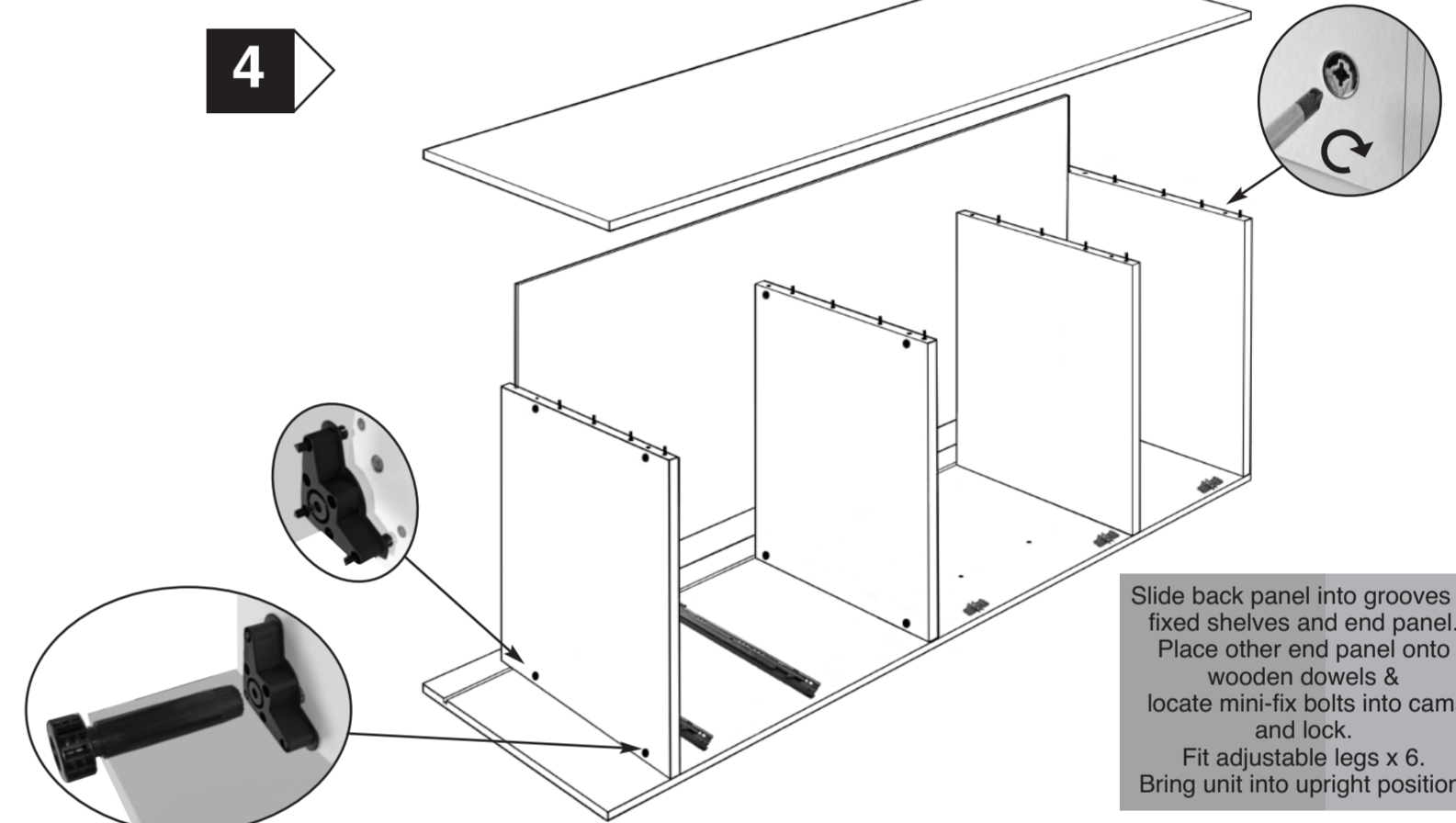
**2A**



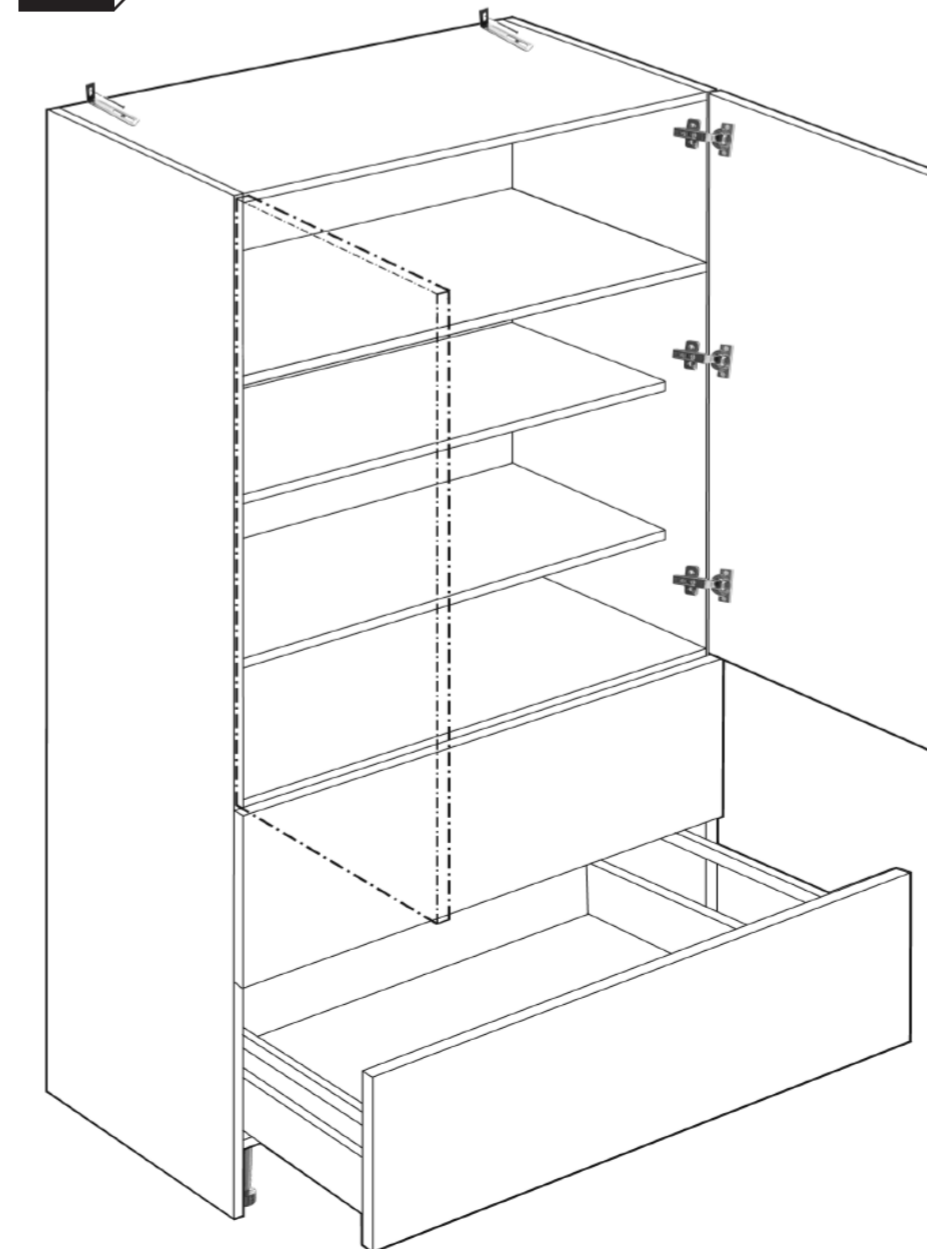
**3**



**4**



**6**



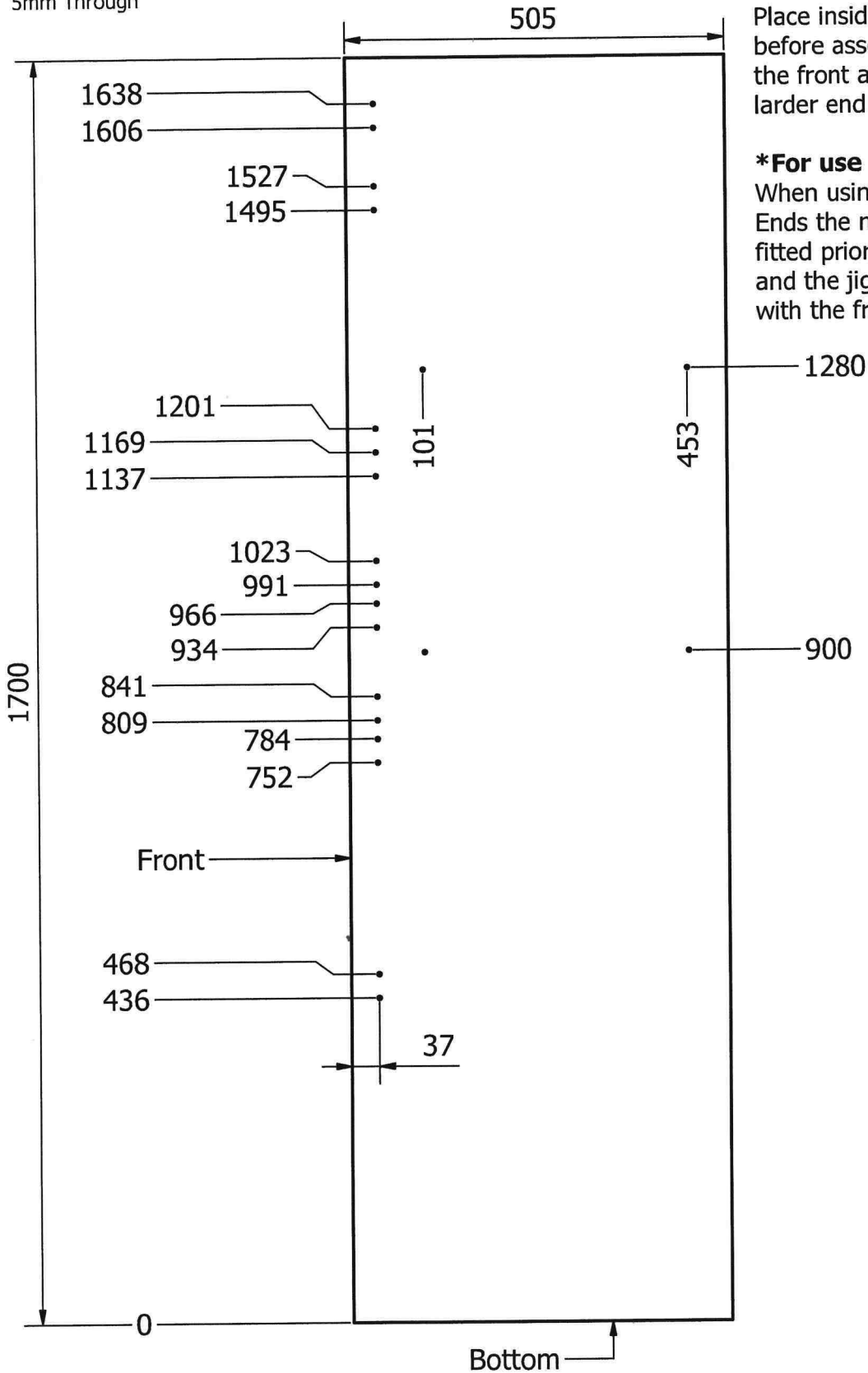
Bring unit into position were it is to be fitted and level in all plains, place 'L' shape brackets provided onto top shelf and secure. Secure unit to wall, screws cannot be provided because of differing wall materials. When unit is securely fitted in position firmly push shelf supports into pre-bored holes in end panels.

**IMPORTANT.** When adjusting the height of the unit make sure that the legs are not adjusted below the nominal 140mm plinth height.

Place shelves onto shelf supports and firmly press home. Bring drawers into position on runners and push home. Bring doors into position locate clip-on hinges onto hinge plates. (See clip-on hinge adjustment opposite for alignment details).

# CHEF'S PANTRY & STANDARD APPLICATIONS JIG

All Holes Are  
5mm Through



Place inside larder unit end  
before assembly, level with  
the front and bottom of the  
larder end

**\*For use with Moderna\***  
When using Shallow Depth  
Ends the metal trim must be  
fitted prior to using the jig  
and the jig placed level  
with the front of the trim

DESIGNED BY B. Searson	CHECKED BY B. Myers	APPROVED BY B. Myers	DATE 14/08/2019	DATE 11/07/2019
<b>JJOplc</b>	<b>Chefs Pantry &amp; Standard Applications Jig</b>			
	ISSUE 1	SHEET 1 / 1		